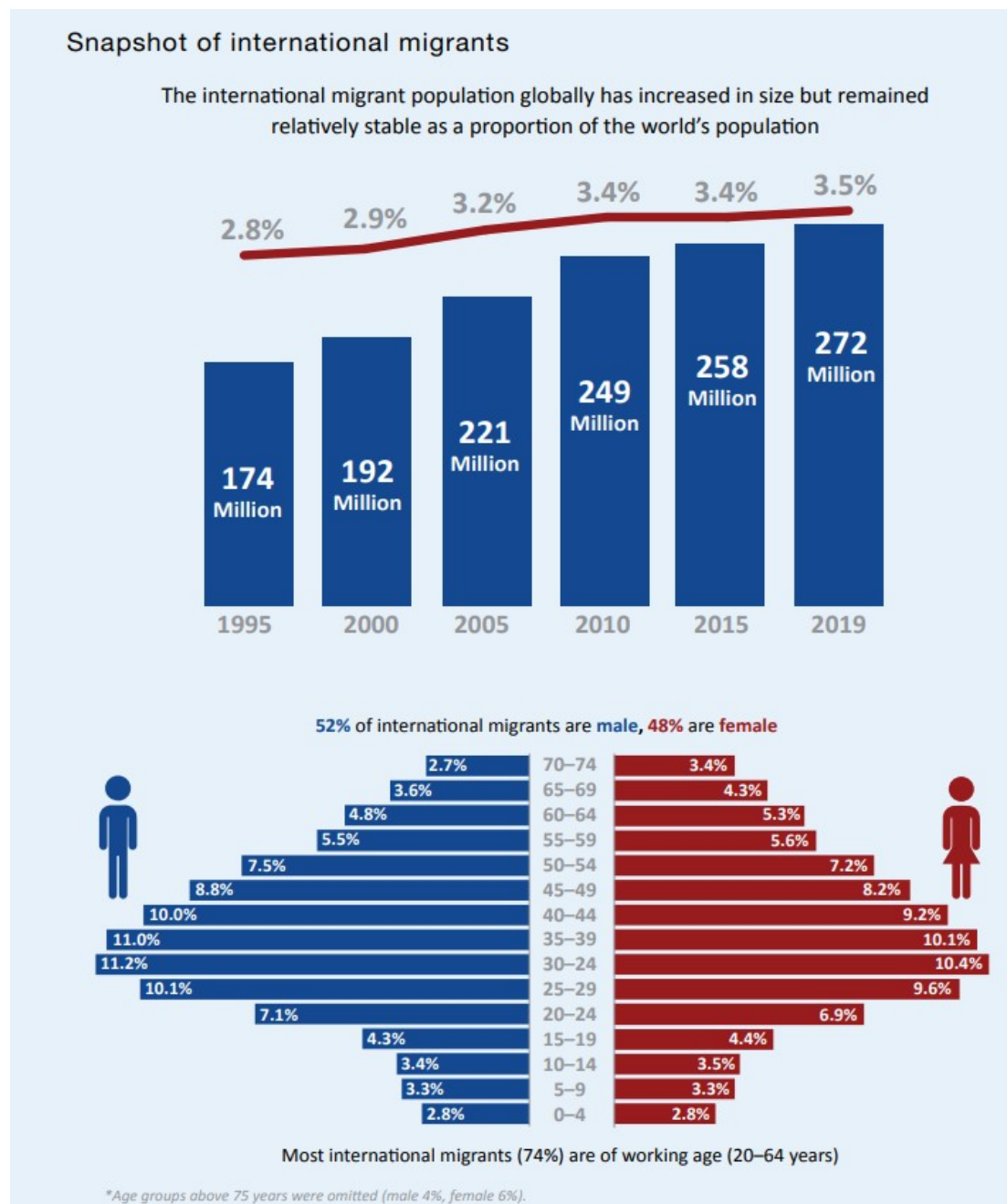


Global migration, by the numbers: who migrates, where they go and why

<https://www.weforum.org/agenda/2020/01/iom-global-migration-report-international-migrants-2020/>

There are an estimated 272 million international migrants around the world. And while that equals just 3.5% of the world's population, it already surpasses some projections for 2050. Since 1970, the number of people living in a country other than where they were born has tripled.



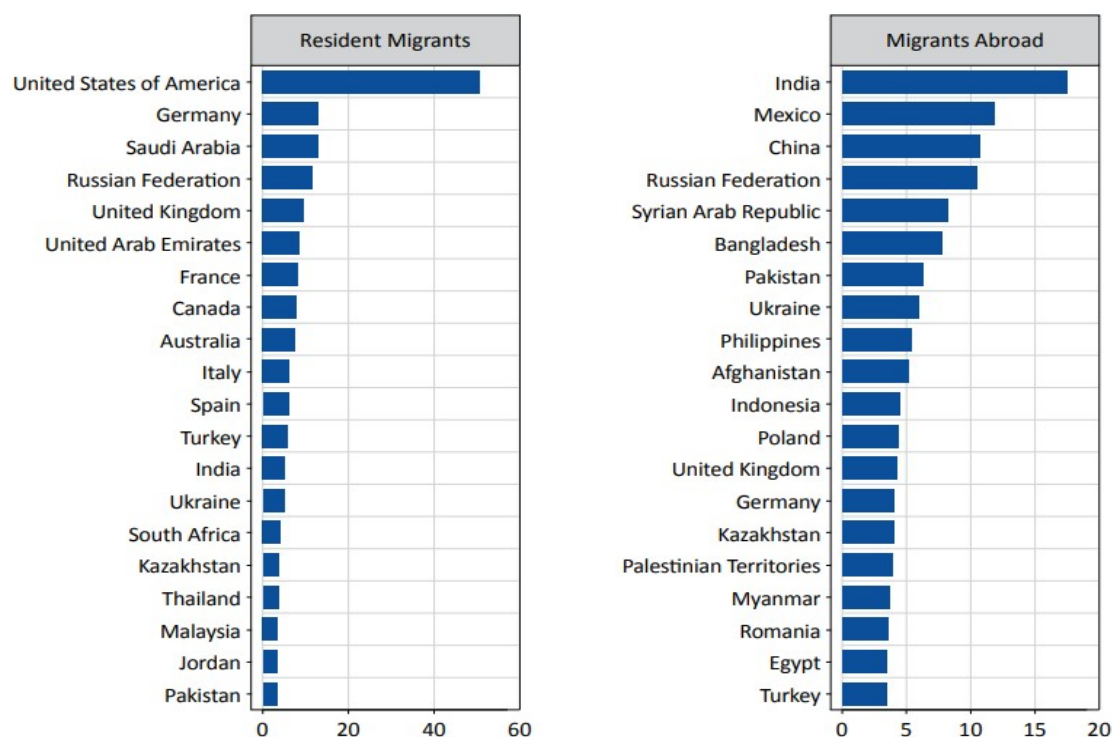
Dangerous journeys

In the wake of the death of hundreds of people when two boats sank near the Italian island of Lampedusa in 2013, the International Organization for Migration started tracking the numbers of people dying on migratory routes worldwide.

In the five years since, more than 30,900 people have lost their lives trying to reach other countries. The Mediterranean sea remains the deadliest route, claiming the lives of nearly 18,000 people in that time. Since 2014, over 1,800 deaths have been recorded along the border between the United States and Mexico.

India continues to be the main origin of international migrants, with 17.5 million Indian-born people living abroad. Mexico and China both also have more than 10 million former residents spread around the world.

Figure 3. Top 20 destinations (left) and origins (right) of international migrants in 2019 (millions)



Source: UN DESA, 2019a (accessed 18 September 2019).

The United States is the primary destination for migrants, though as a proportion of its population, the United Arab Emirates has the largest migrant contingent.

With the total number of refugees the highest on record, Turkey was the biggest host nation for the fifth consecutive year, taking in millions of refugees, particularly from Syria.

Table 1. Key facts and figures from the World Migration Reports, 2000 and 2020

	2000 report	2020 report
Estimated number of international migrants	150 million	272 million
Estimated proportion of world population who are migrants	2.8%	3.5%
Estimated proportion of female international migrants	47.5%	47.9%
Estimated proportion of international migrants who are children	16.0%	13.9%
Region with the highest proportion of international migrants	Oceania	Oceania
Country with the highest proportion of international migrants	United Arab Emirates	United Arab Emirates
Number of migrant workers	-	164 million
Global international remittances (USD)	126 billion	689 billion
Number of refugees	14 million	25.9 million
Number of internally displaced persons	21 million	41.3 million
Number of stateless persons	-	3.9 million
Number of IOM Member States*	76	173
Number of IOM field offices*	120	436 ⁺

Sources: See IOM, 2000 and the present edition of the report for sources.

Notes: The dates of the data estimates in the table may be different to the report publishing date (refer to the reports for more detail on dates of estimates); refer to chapter 3 of this report for regional breakdowns; * indicates the data was not included in the report but is current for that year; ⁺ as at 28 October 2019.