

Fonctions de deux variables

19 juillet 2024

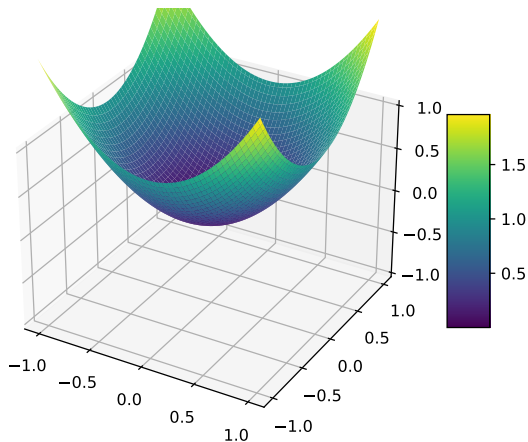


Figure – Surface représentative de $f : (x, y) \in \mathbb{R}^2 \mapsto x^2 + y^2$.

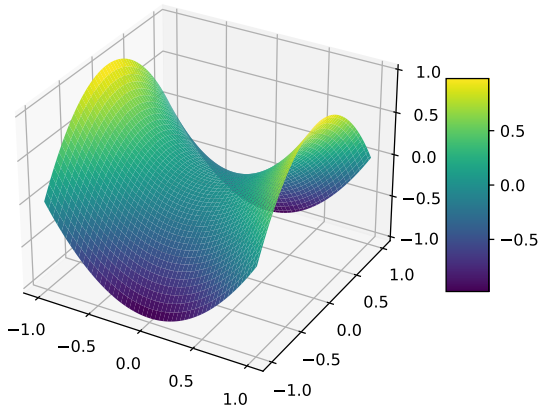


Figure – Surface représentative de $f : (x, y) \in \mathbb{R}^2 \mapsto x^2 - y^2$.

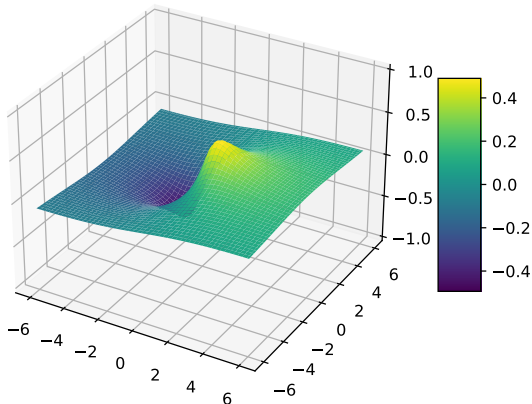


Figure – Surface représentative de $f : (x, y) \in \mathbb{R}^2 \mapsto \frac{x}{x^2 + y^2 + 1}$.

Lignes de niveau

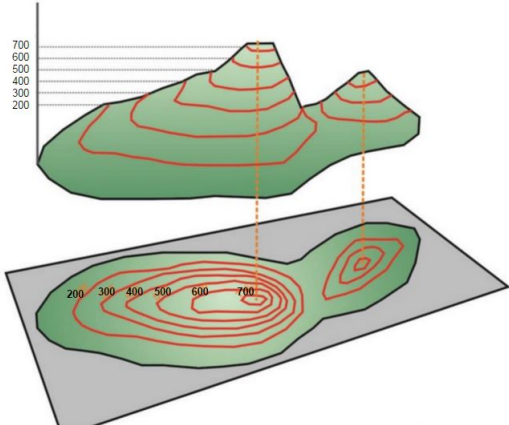


Figure – Lignes de niveau d'altitude.

Lignes de niveau

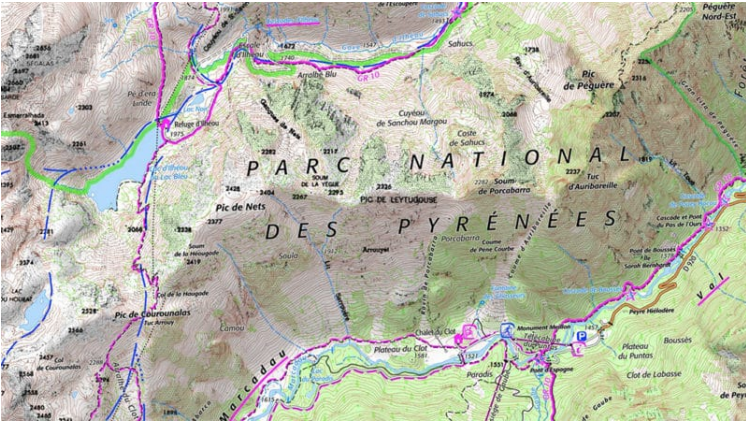


Figure – Lignes de niveau d'altitude.

Lignes de niveau

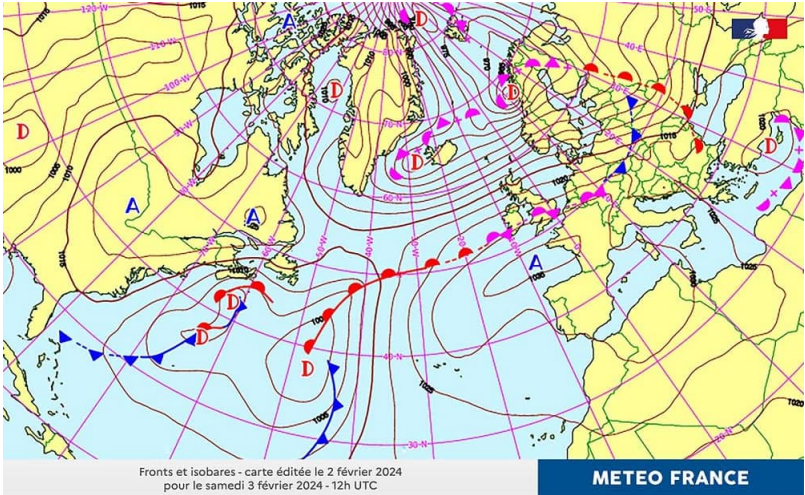


Figure – Lignes isobares.

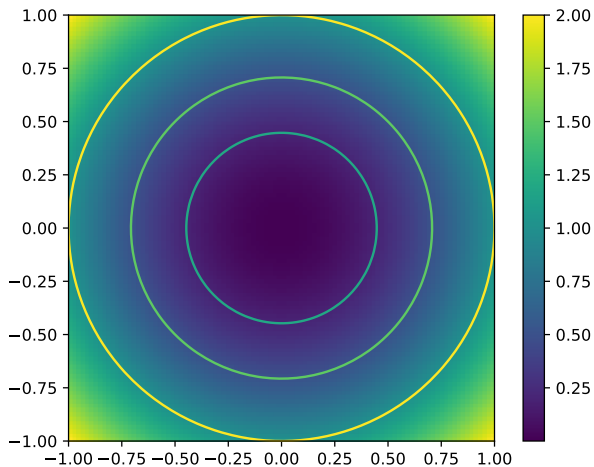


Figure – Lignes de niveau de $f : (x, y) \in \mathbb{R}^2 \mapsto x^2 + y^2$.

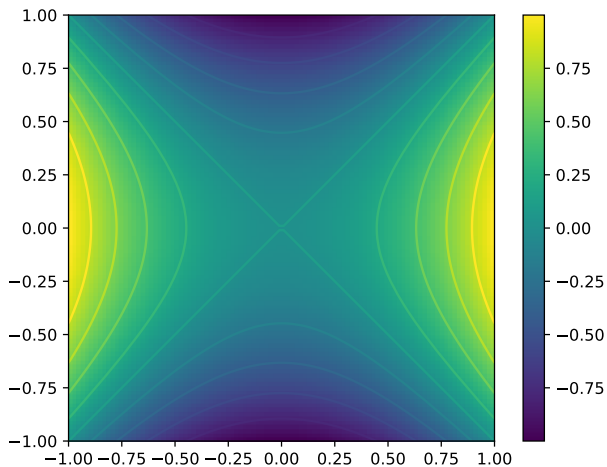


Figure – Lignes de niveau de $f : (x, y) \in \mathbb{R}^2 \mapsto x^2 - y^2$.

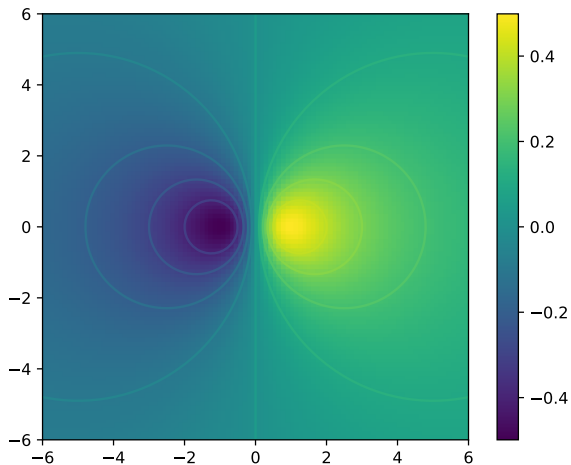


Figure – Lignes de niveau de $f : (x, y) \in \mathbb{R}^2 \mapsto \frac{x}{x^2 + y^2 + 1}$.