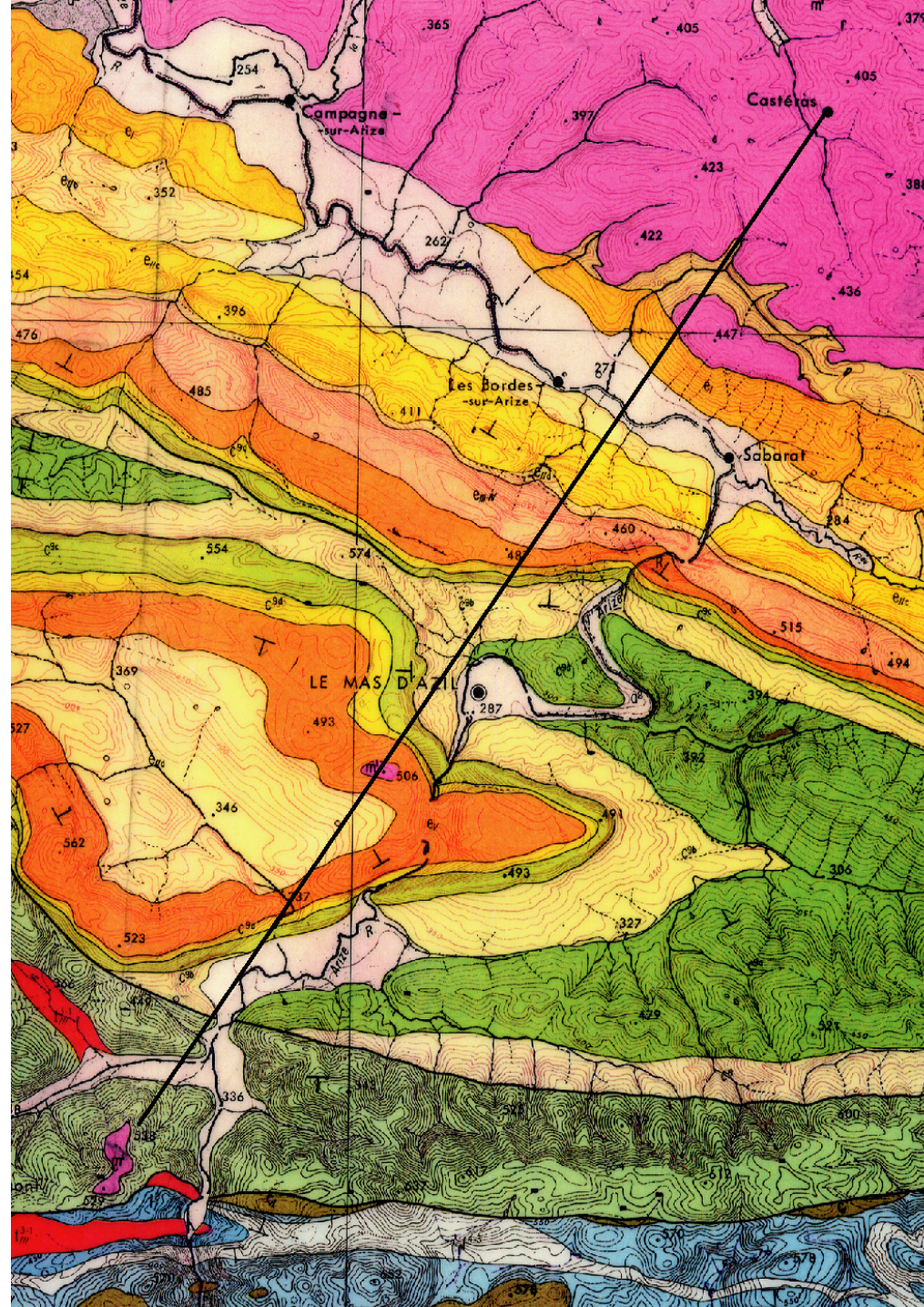


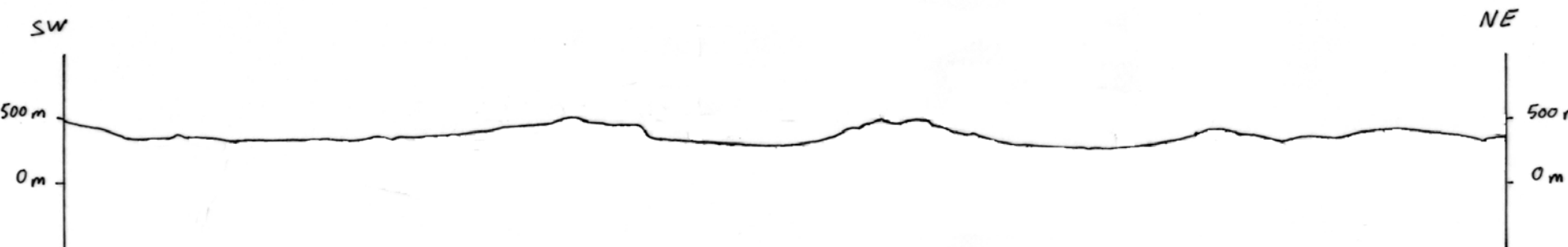
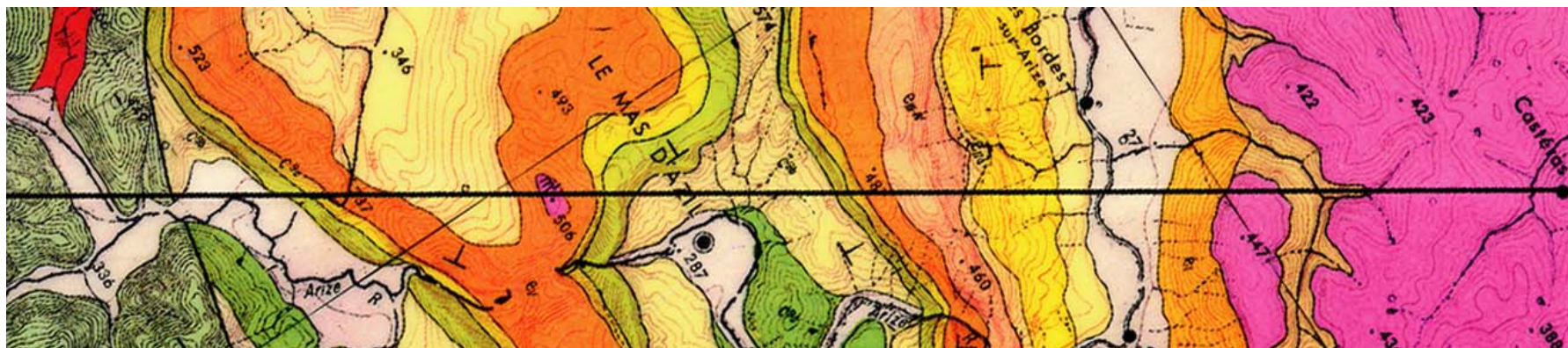
A detailed geological map of the Marseille region in France. The map uses various colors to represent different geological formations: red for older crystalline rocks, green for younger sedimentary rocks, and yellow for alluvial deposits. Blue lines indicate rivers and the Mediterranean Sea. Topographic contour lines are also visible. The city of Marseille is labeled in the bottom right corner.

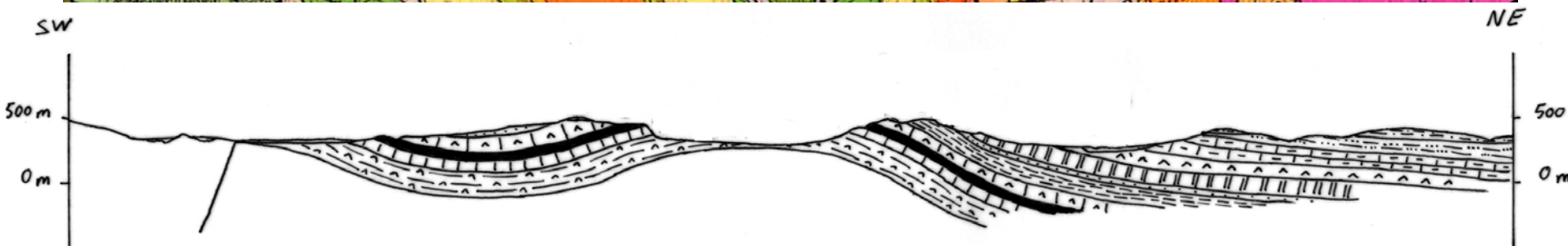
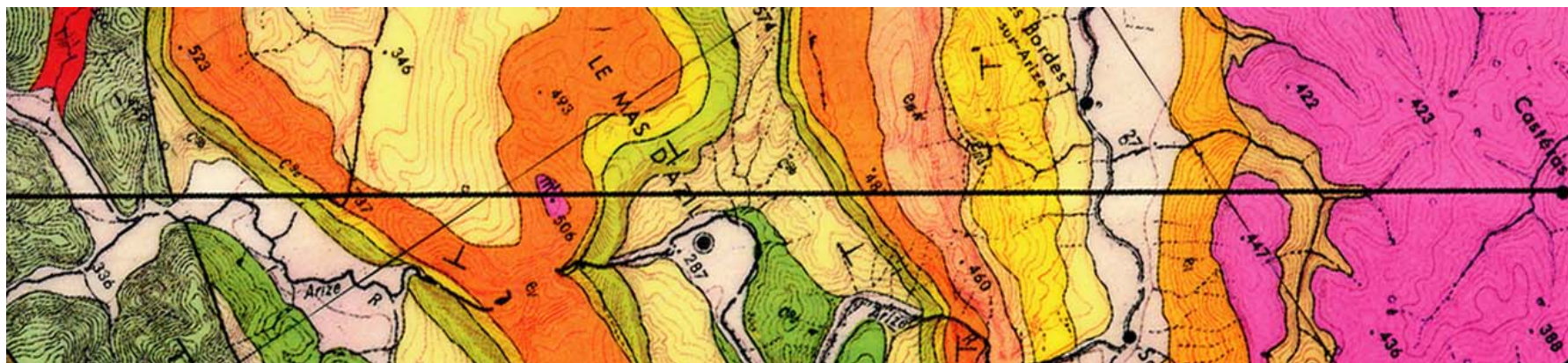
Topographie, cartographie et géomorphologie

5^{ème} séance
Coupe géologique

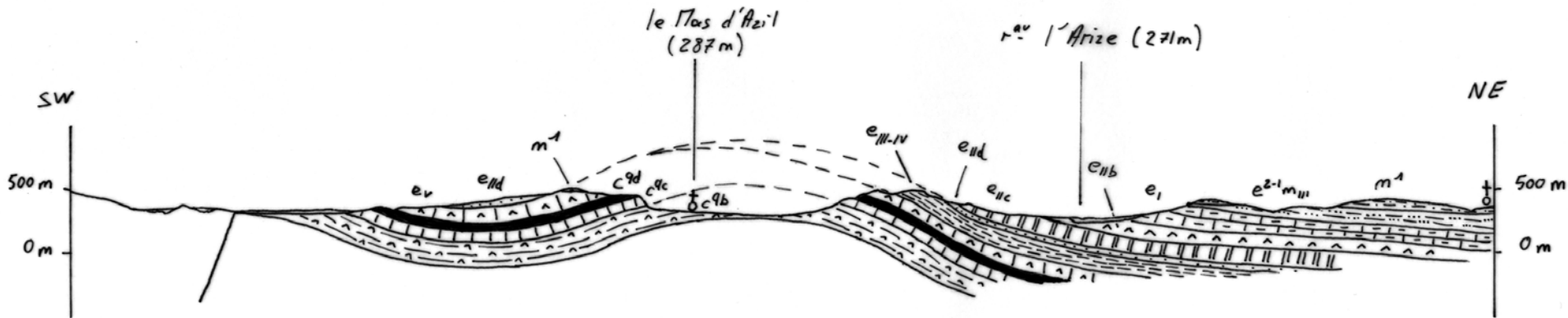
Cartes du Mas d'Azil







Le Mas d'Azil (1/50 000)



- m^1 molasses de l'Armagnac
- $e^{2-1}m_{III}$ bartonien - éocène sup - molasses
- e_1 lutétien sup - calcaire à intercalation gréseuse
- e_{11b} lutétien moy - grès
- e_{11c} lutétien moy - grès et calcaire marneux
- e_{11d} lutétien moy - marnes

- e_{III-IV} yprésien et sparnacien - marnes et calcaires
- e_v thanétien - calcaire à miliolites
- c_{9d} danien - marnes rouges sup.
- c_{9c} danien - calcaire lithographique
- c_{9b} danien - marnes rouges inf.
- c_{5-4} cénomanién - marnes schisteuses