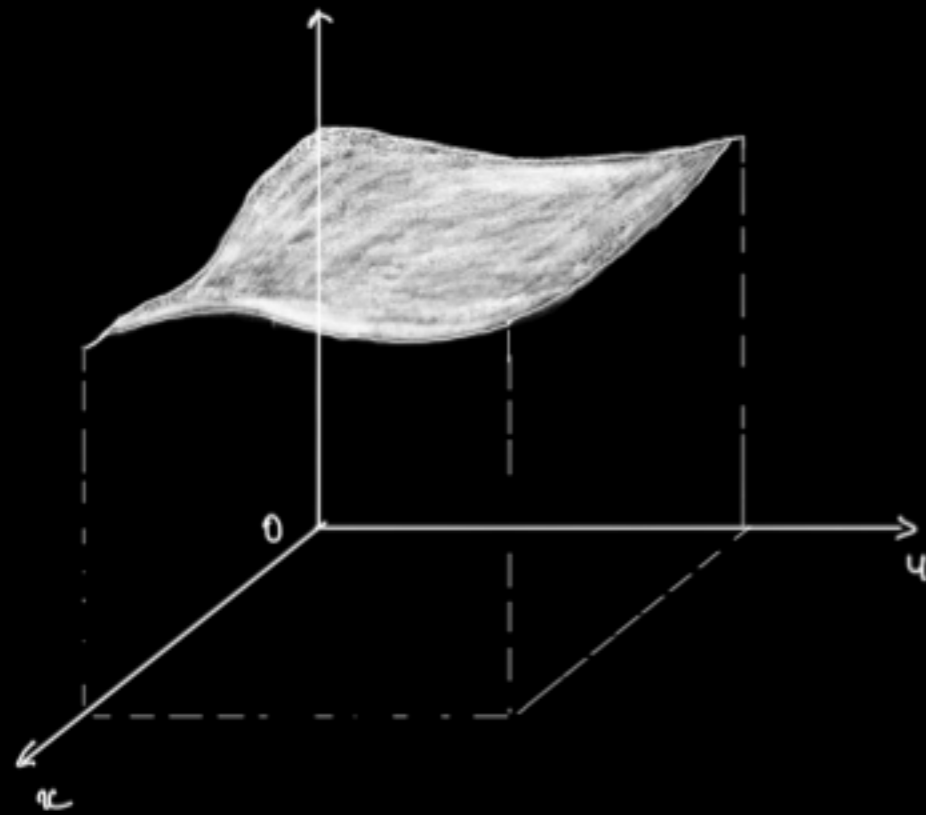
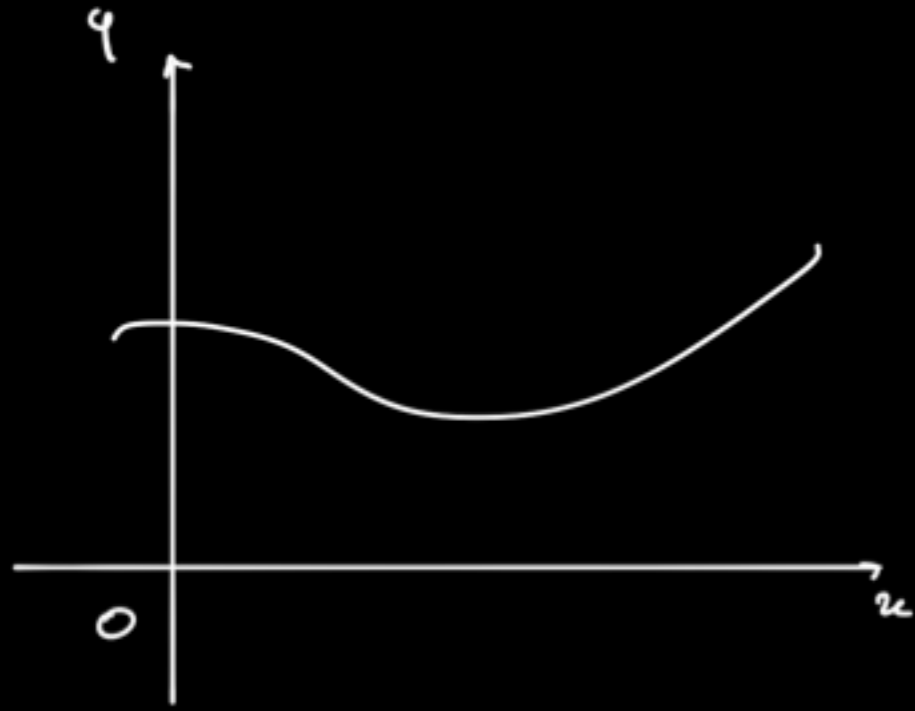
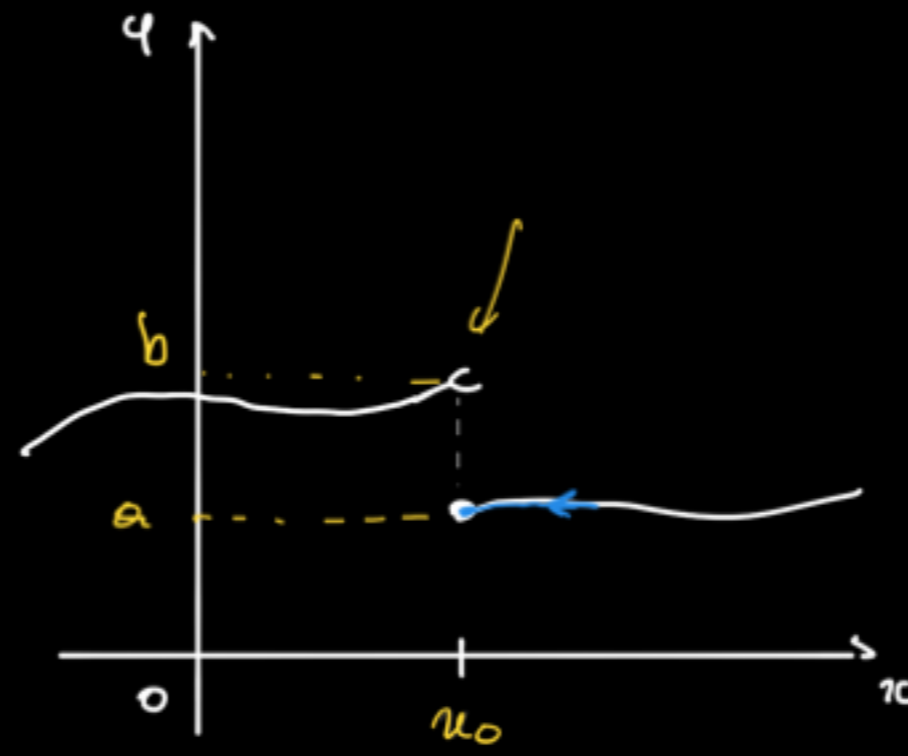


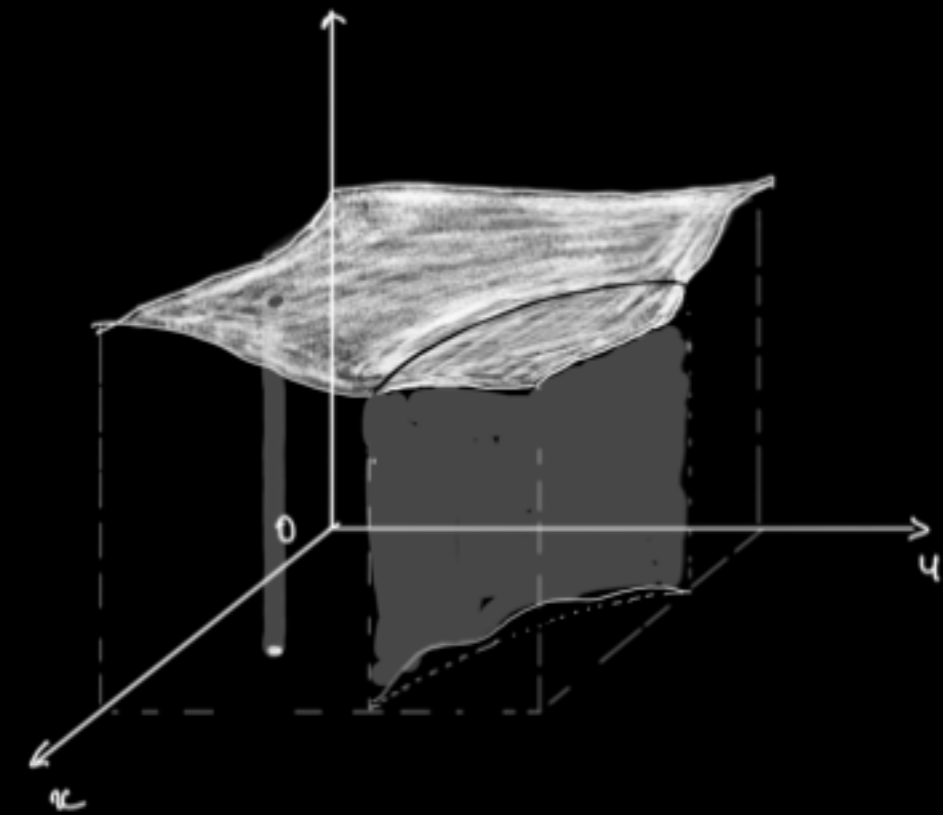
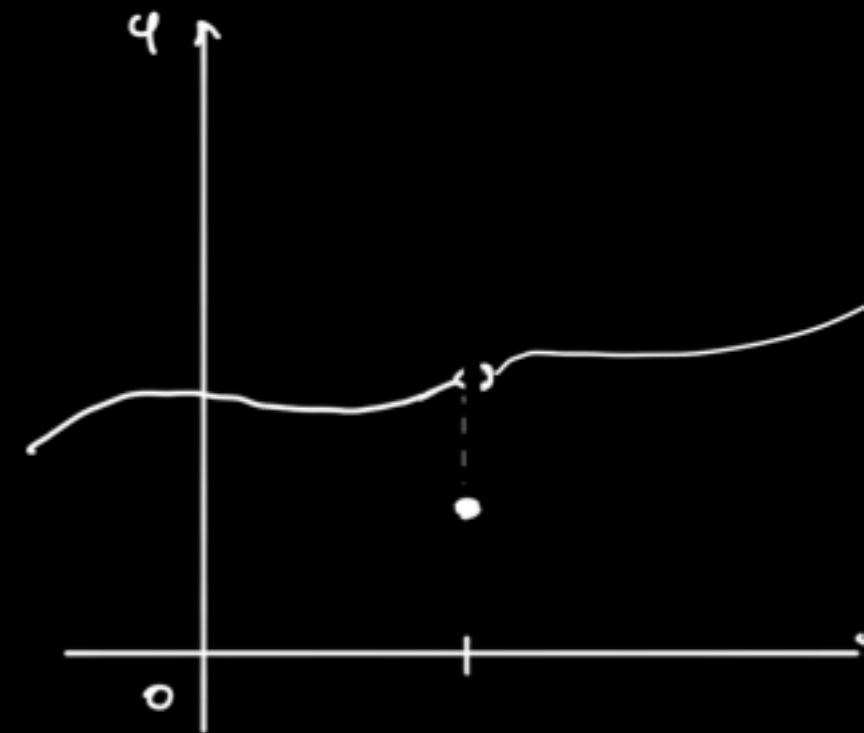
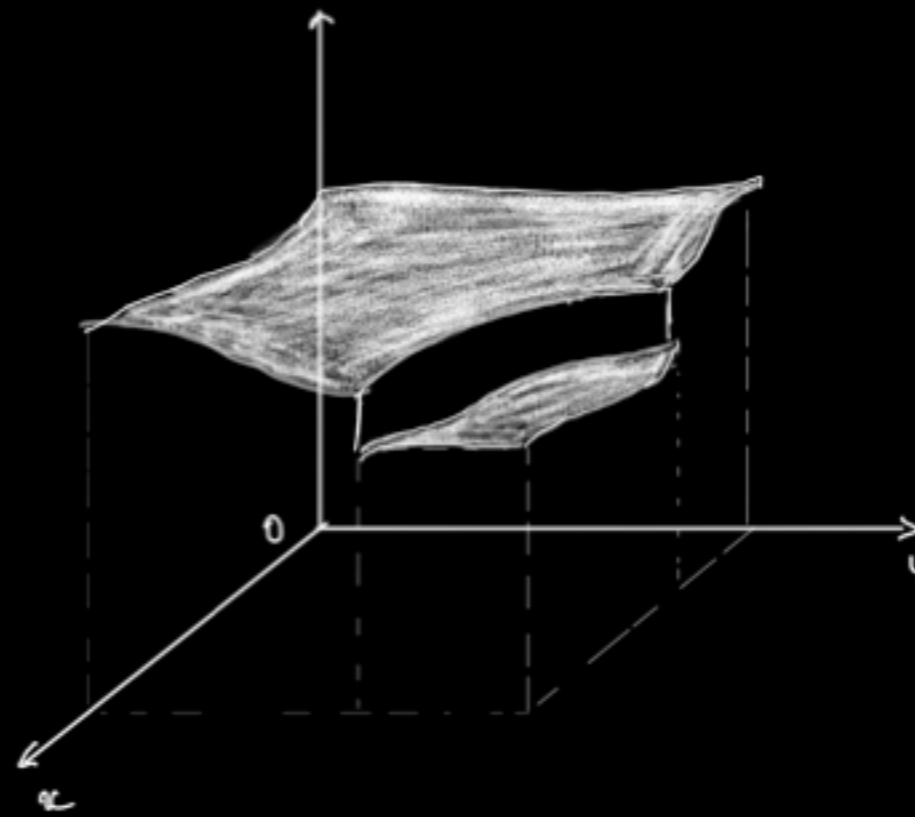
Continue.



Discontinue



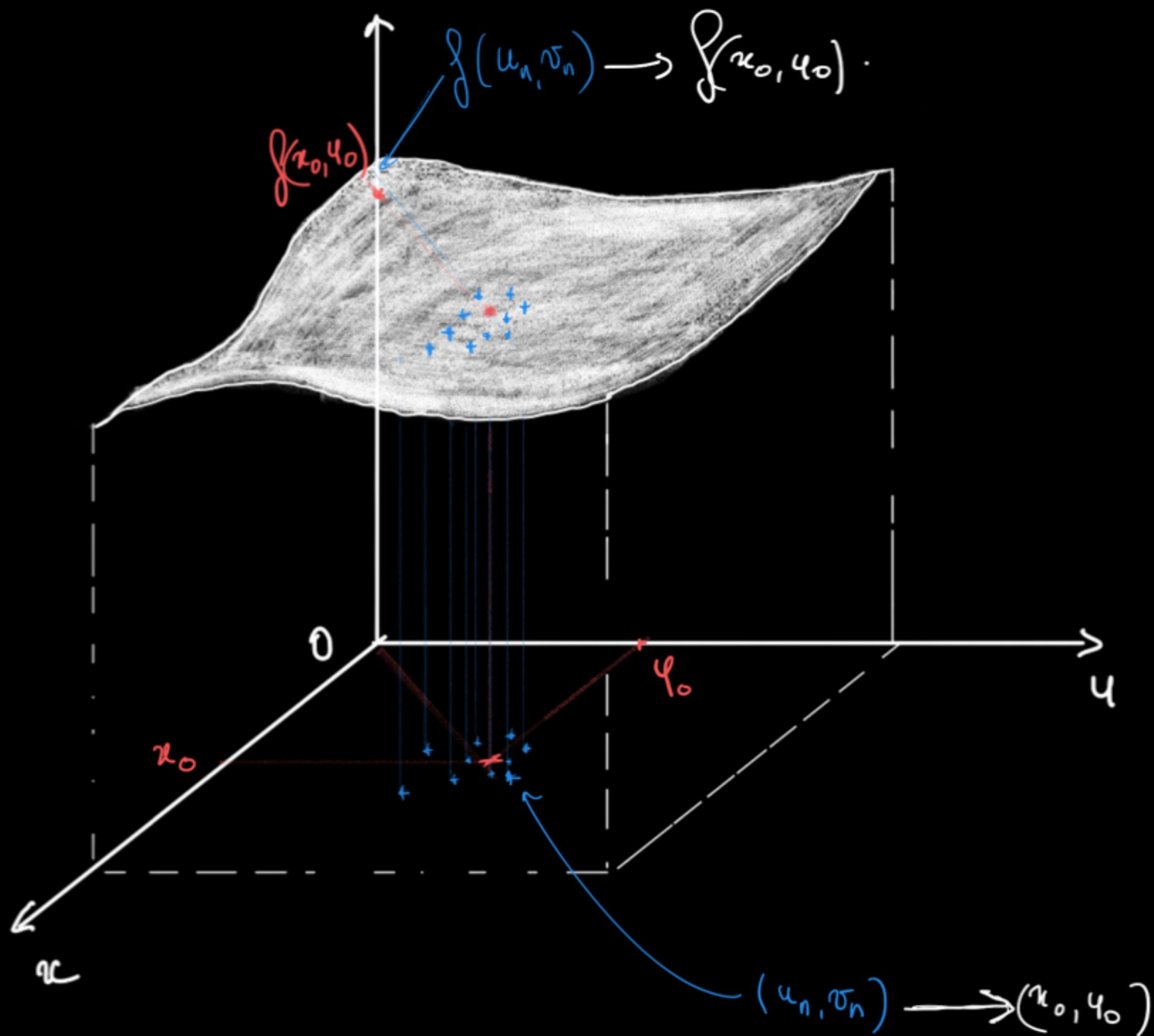
$$f(x_0) = a$$



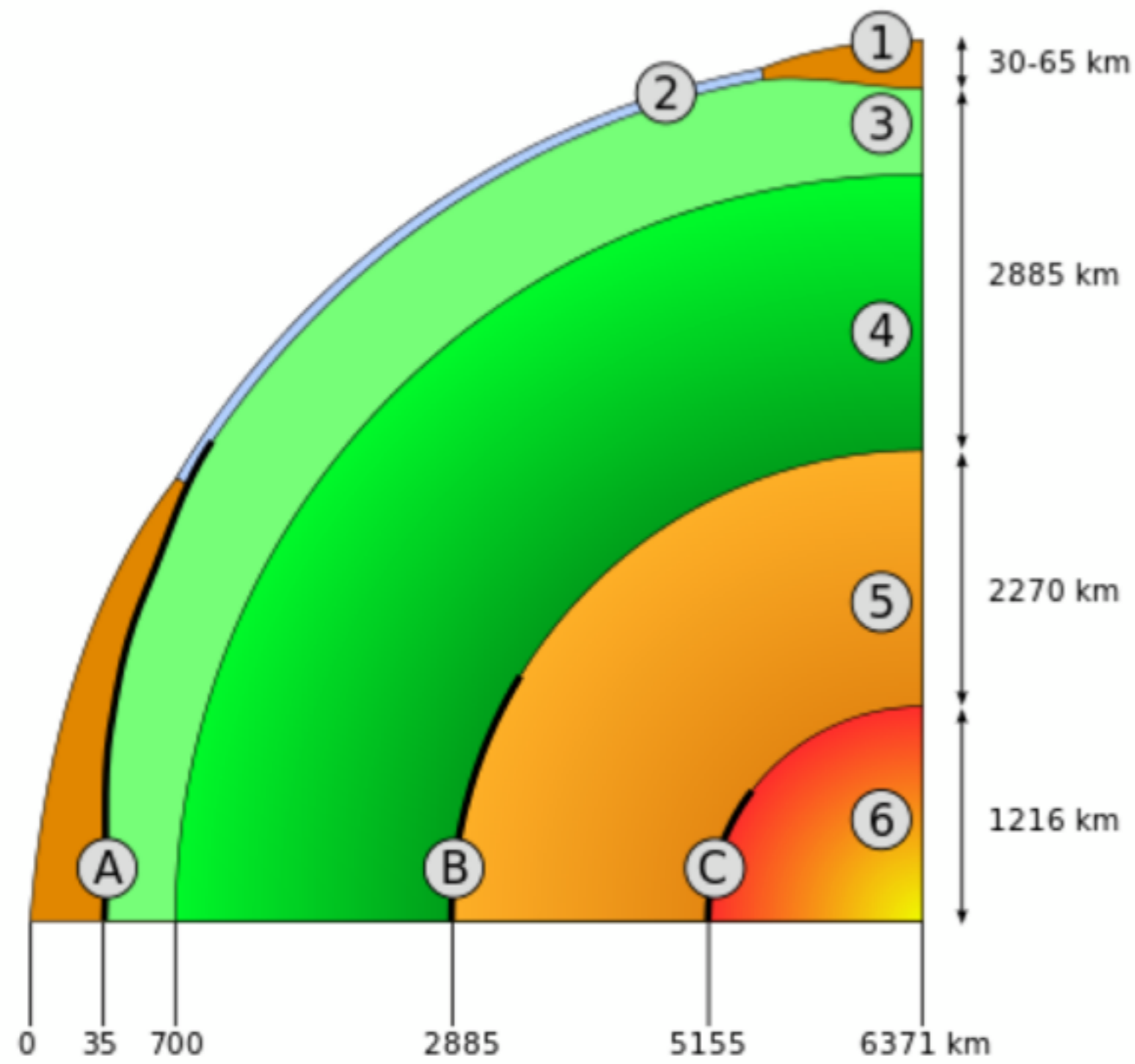
$$\text{Si } (u_n, v_n) \xrightarrow{n \rightarrow +\infty} (x_0, y_0)$$

$$\text{alors } f(u_n, v_n) \xrightarrow{n \rightarrow +\infty} f(x_0, y_0)$$

Définition séquentielle  
de la continuité  
en  $(x_0, y_0)$ .







*Structure interne de la Terre :*

- 1. Croûte continentale
- 2. Croûte océanique
- 3. Manteau supérieur (ou **Asthénosphère**)
- 4. Manteau inférieur (ou **Mésosphère**)
- 5. **Noyau externe**
- 6. **Noyau interne** (ou graine)
- A. Discontinuité de Mohorovičić**
- B. Discontinuité de Gutenberg**
- C. Discontinuité de Lehmann**