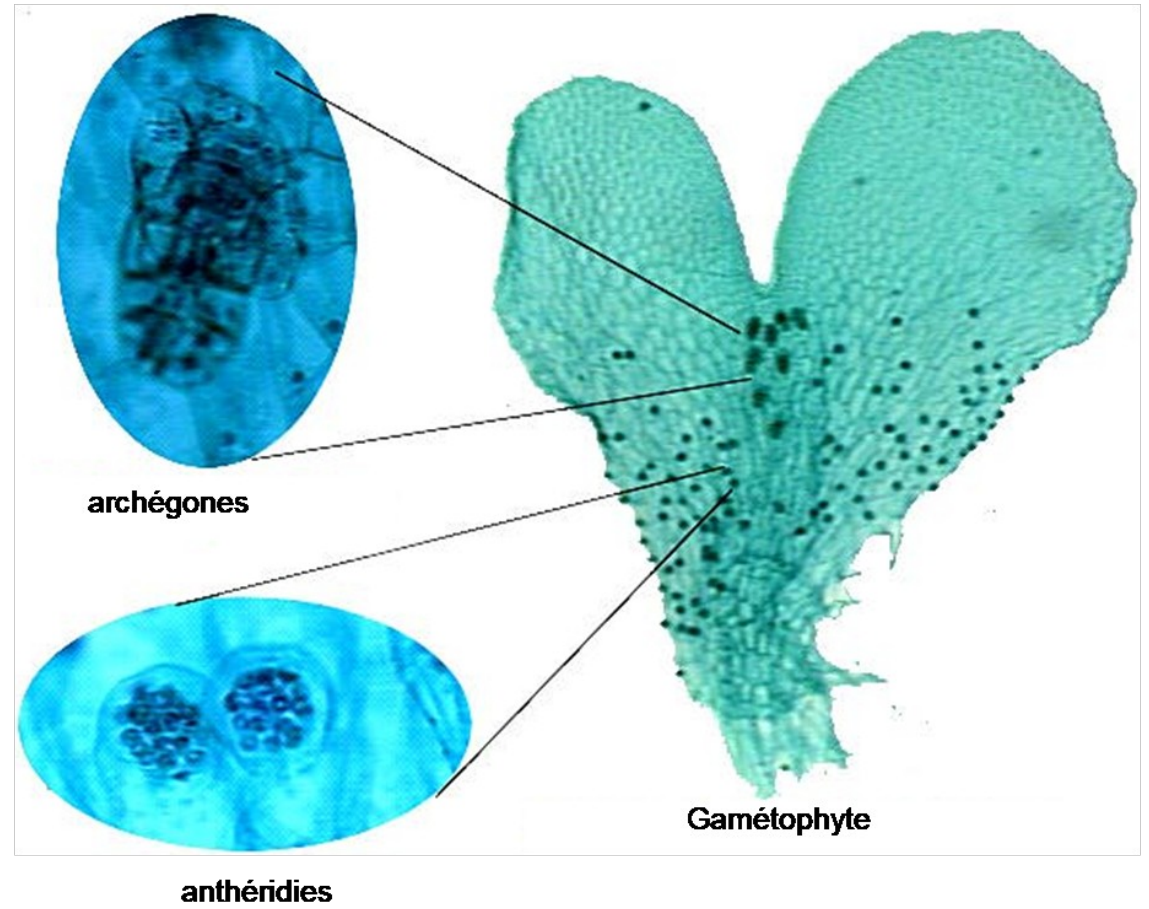
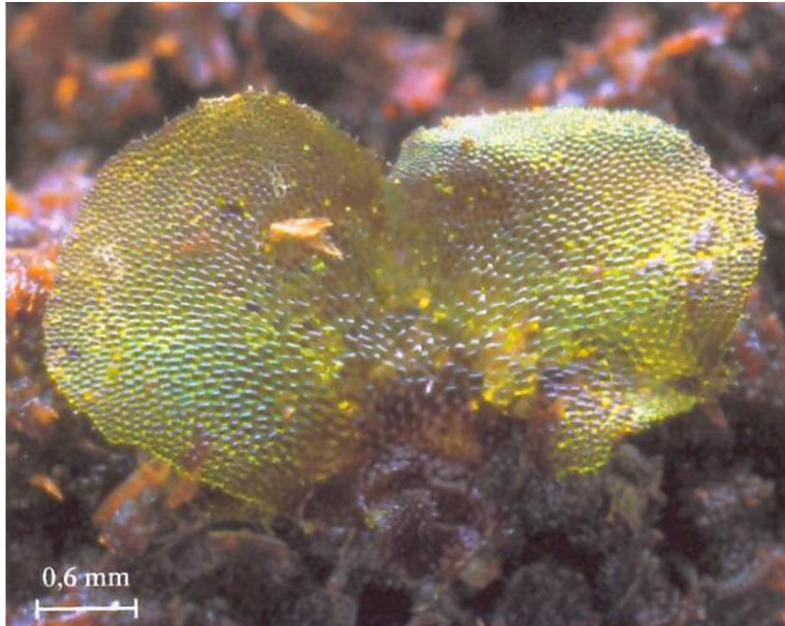
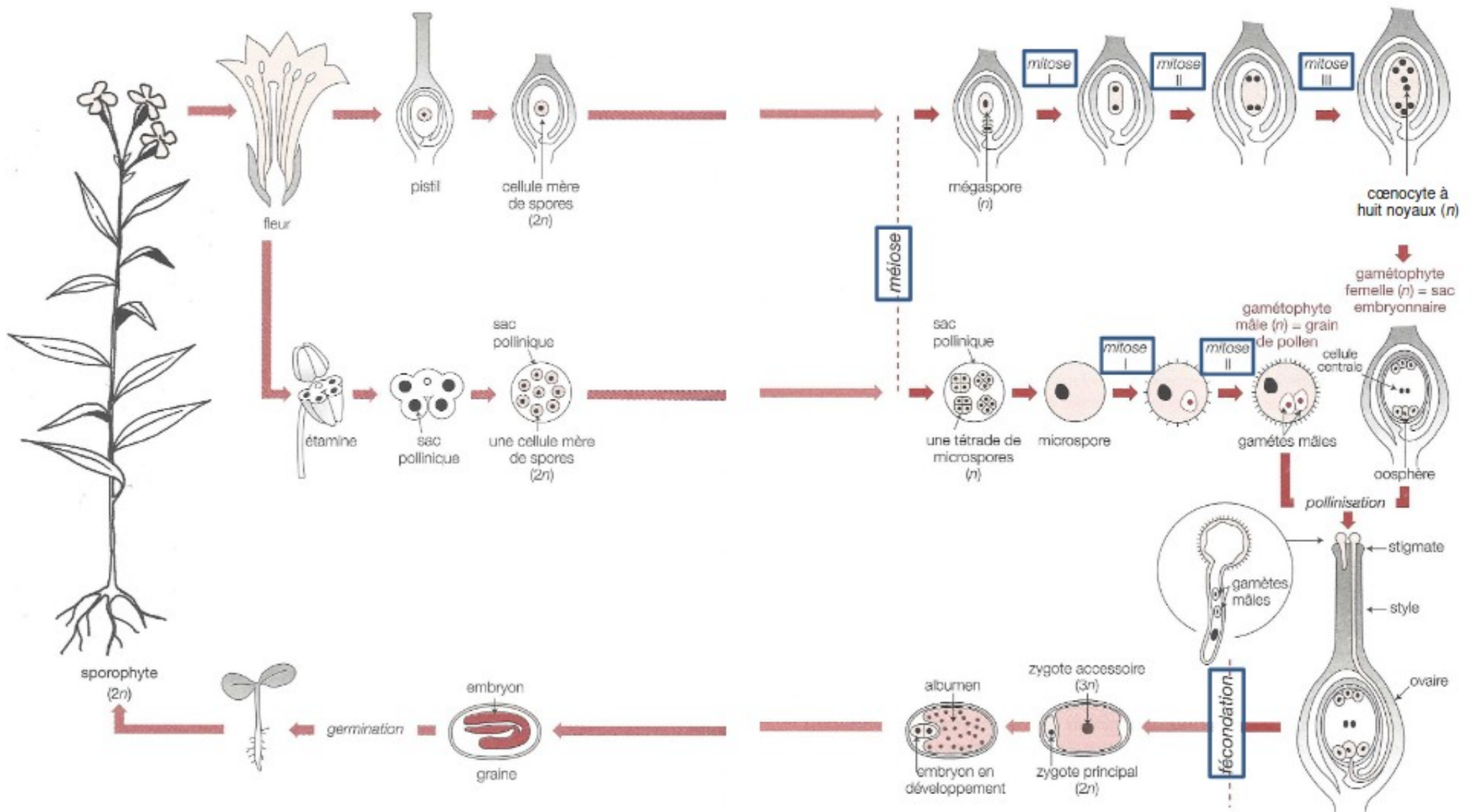


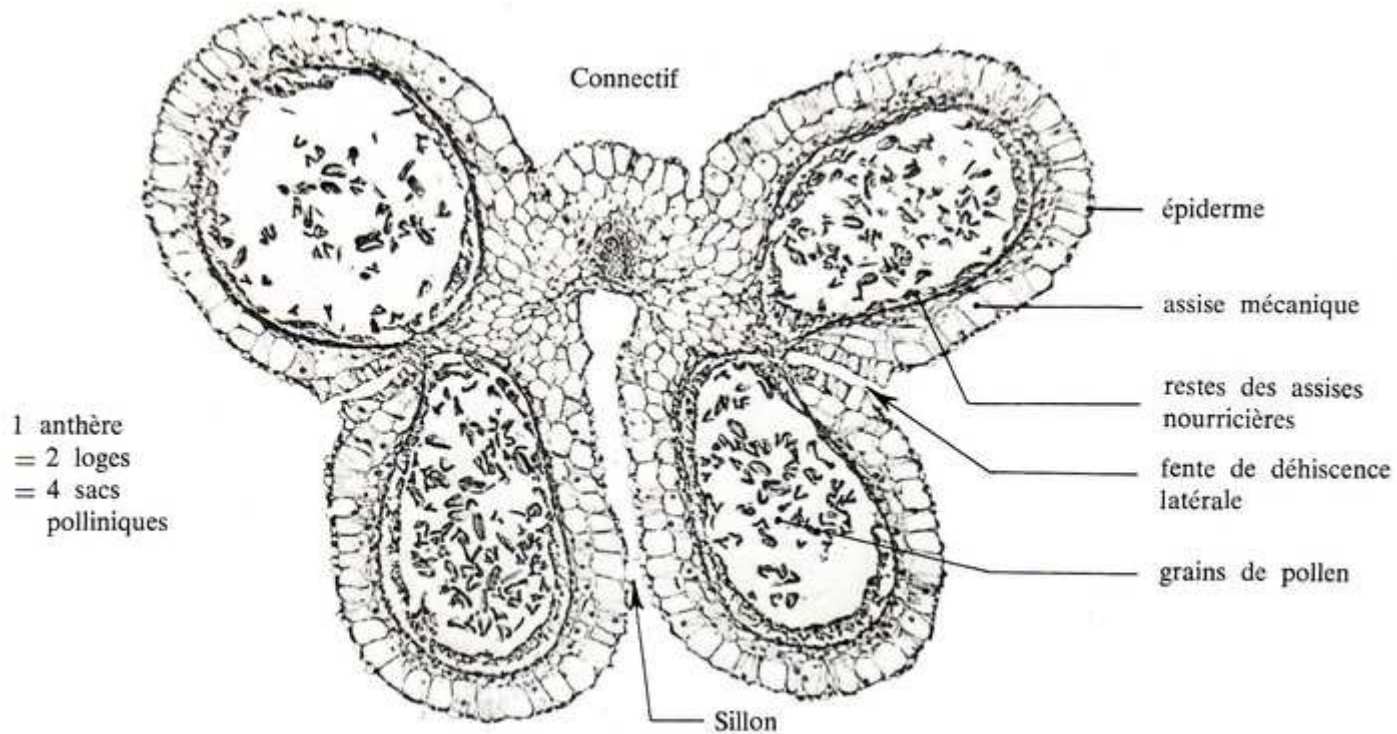




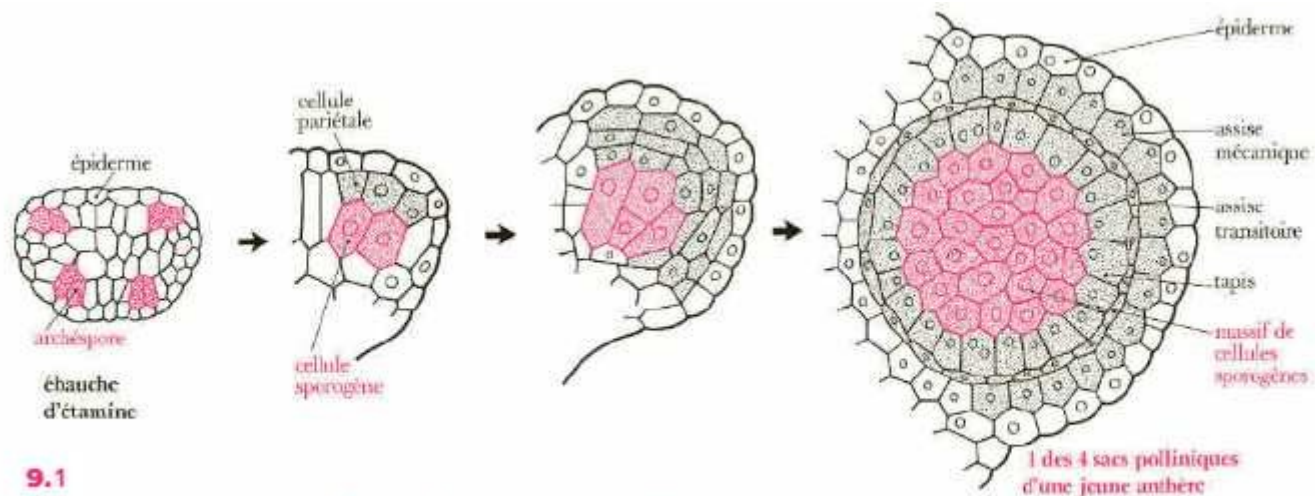
Prothalle : face supérieure





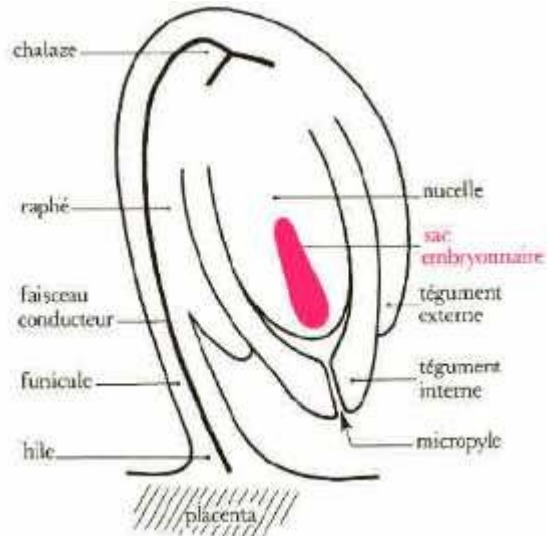
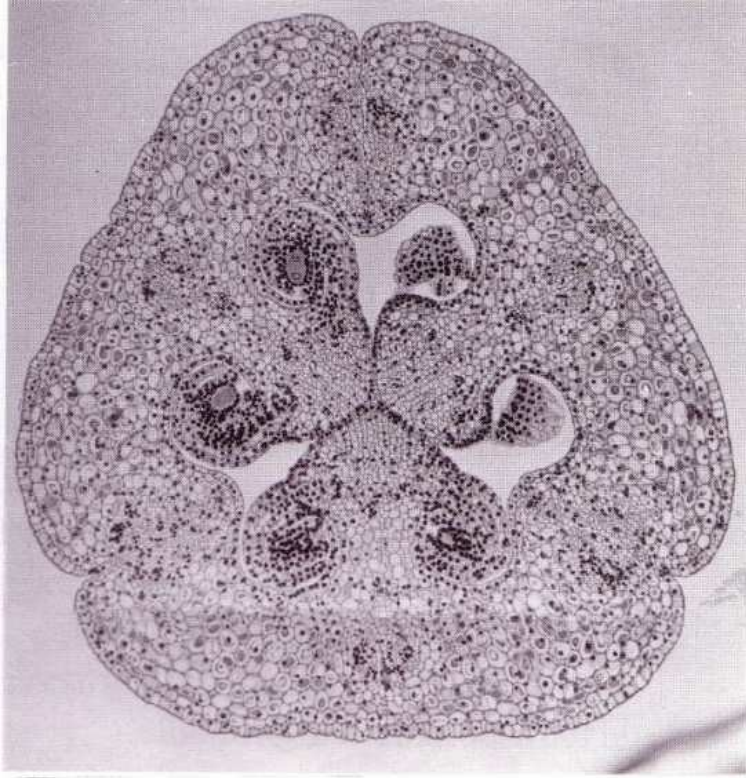


Anthère mûre. Coupe transversale. Lis ($\times 20$).

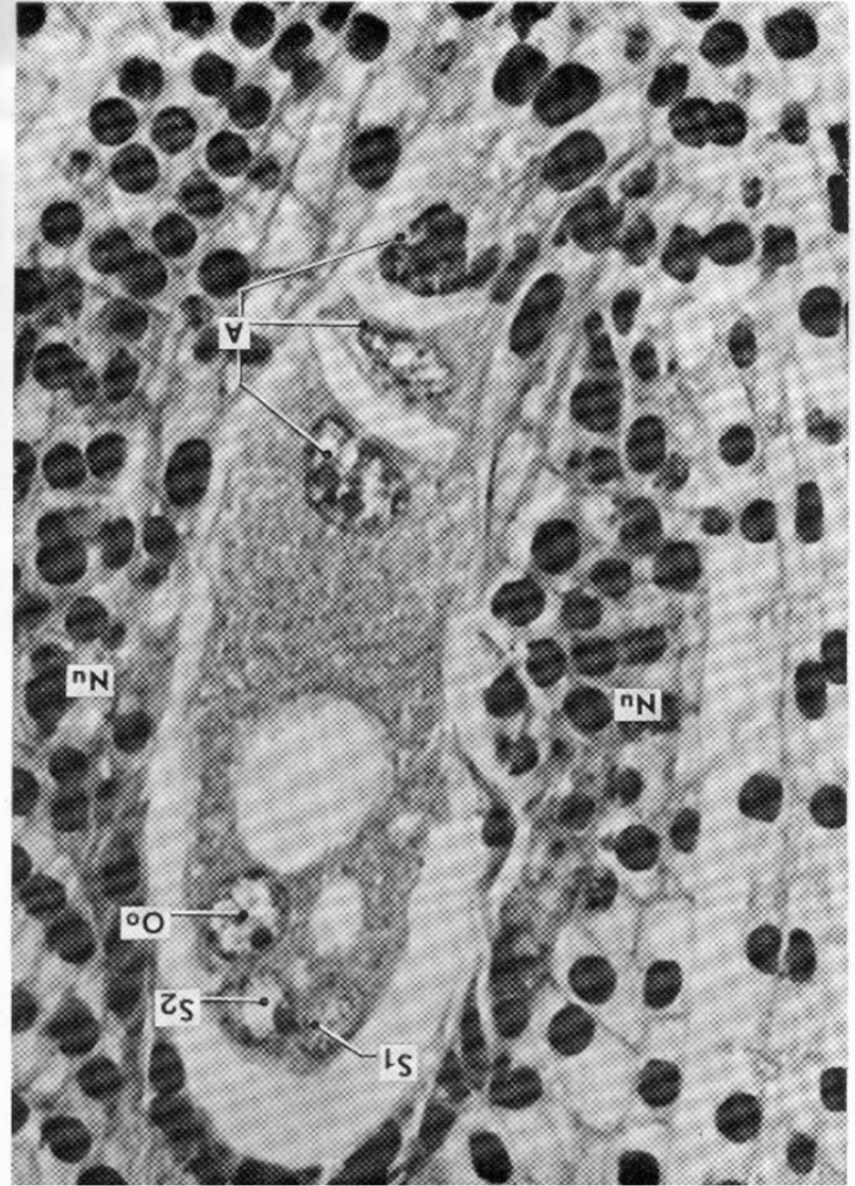


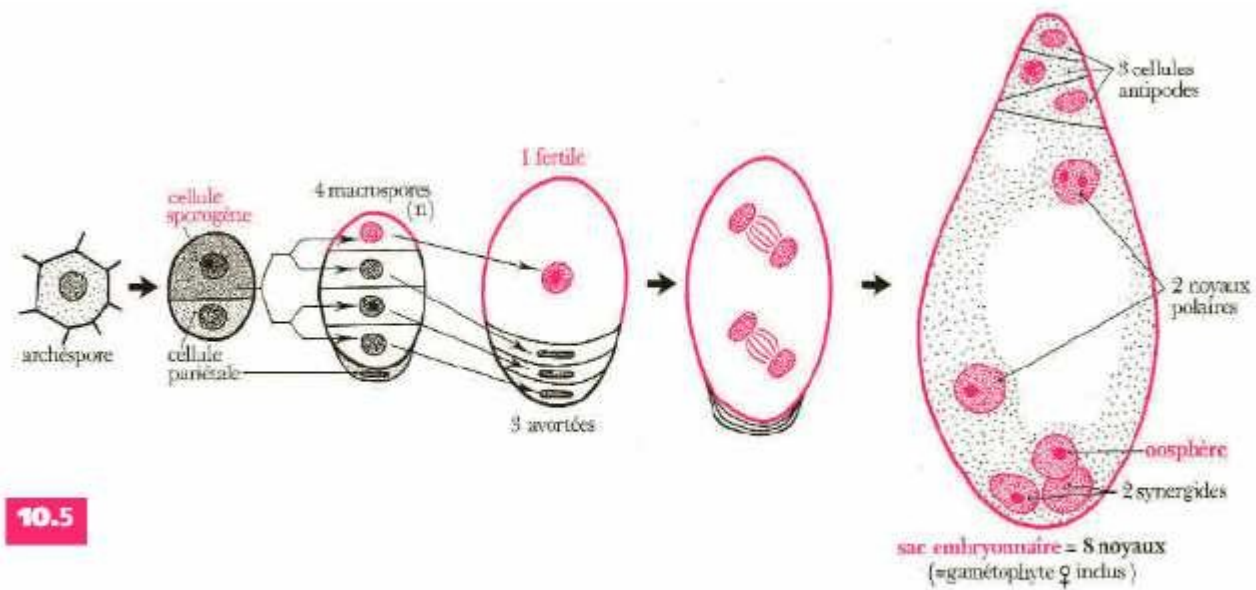
9.1

9-1. Mise en place des types cellulaires dans une jeune anthère.



Sac embryonnaire du Lis blanc (a, antipodes) (G x 500).
 L'osphère : S₁, S₂, noyaux des synergides ; nu, nucelle ; oo, noyau de





10.5

10-5. Formation du gamétophyte femelle ou sac embryonnaire (cas d'un sac monosporique).

