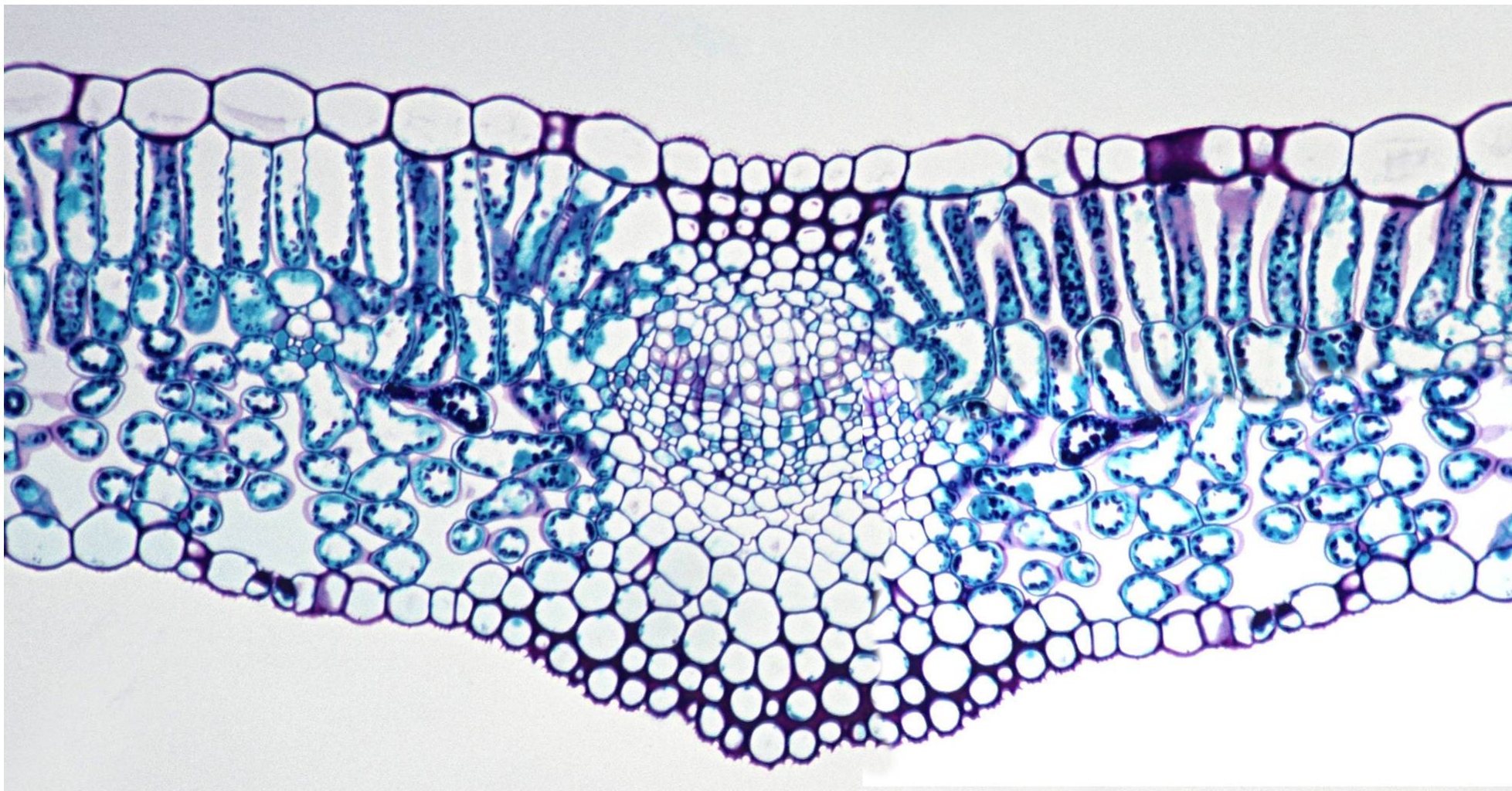


BC 02 :

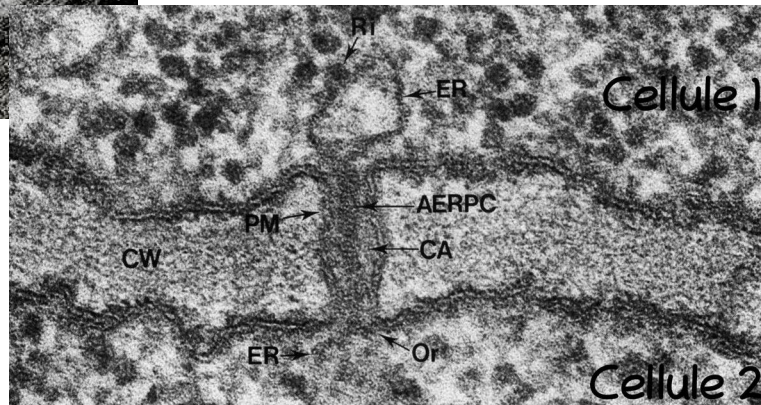
La cellule du parenchyme palissadique : organisation générale et fonctionnement d'une cellule eucaryote spécialisée autotrophe au carbone



Parenchyme palissadique



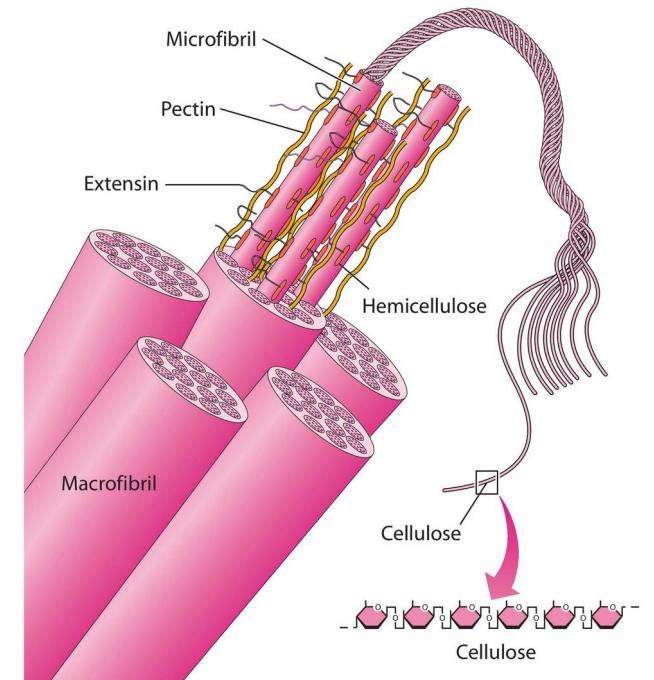
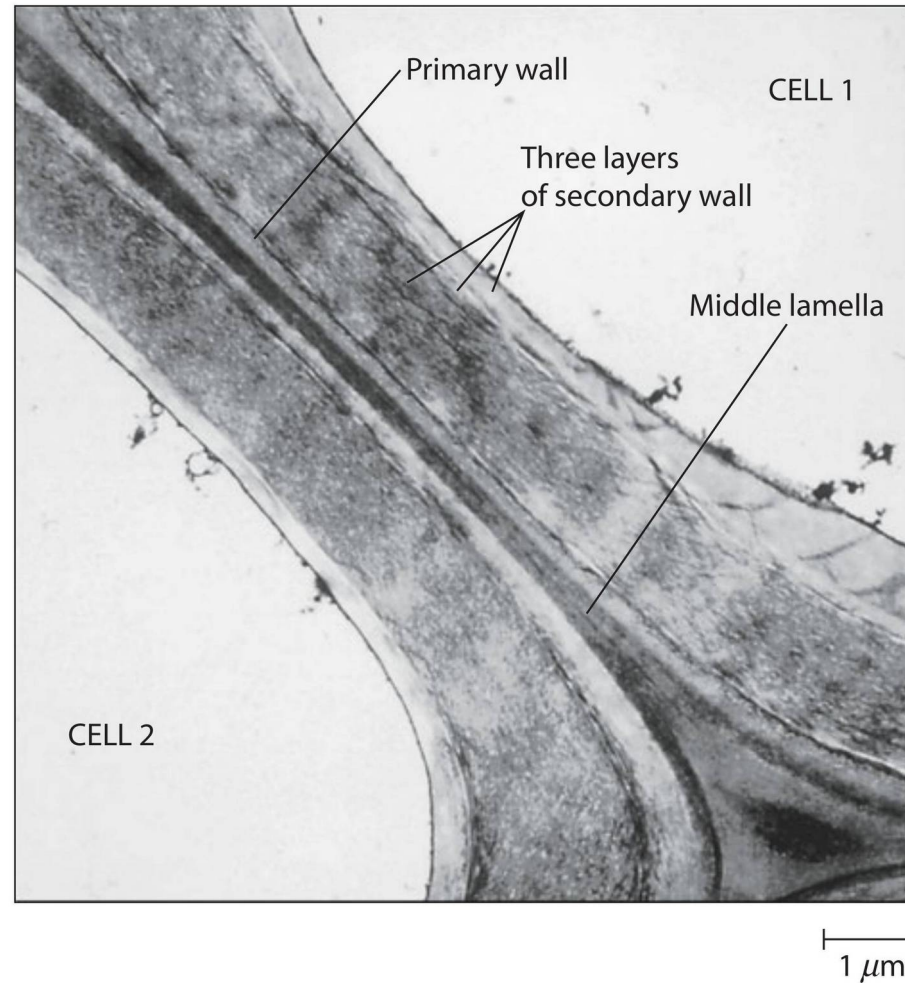
Cellule et organites



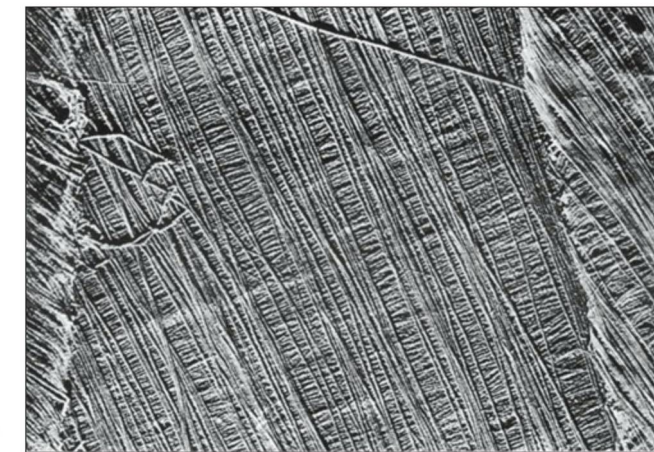
3.0 μm

Paroi

- Lamelle moyenne
- Cellulose
- Pectines
- Hemicellulose
- HRGP
- Lignine

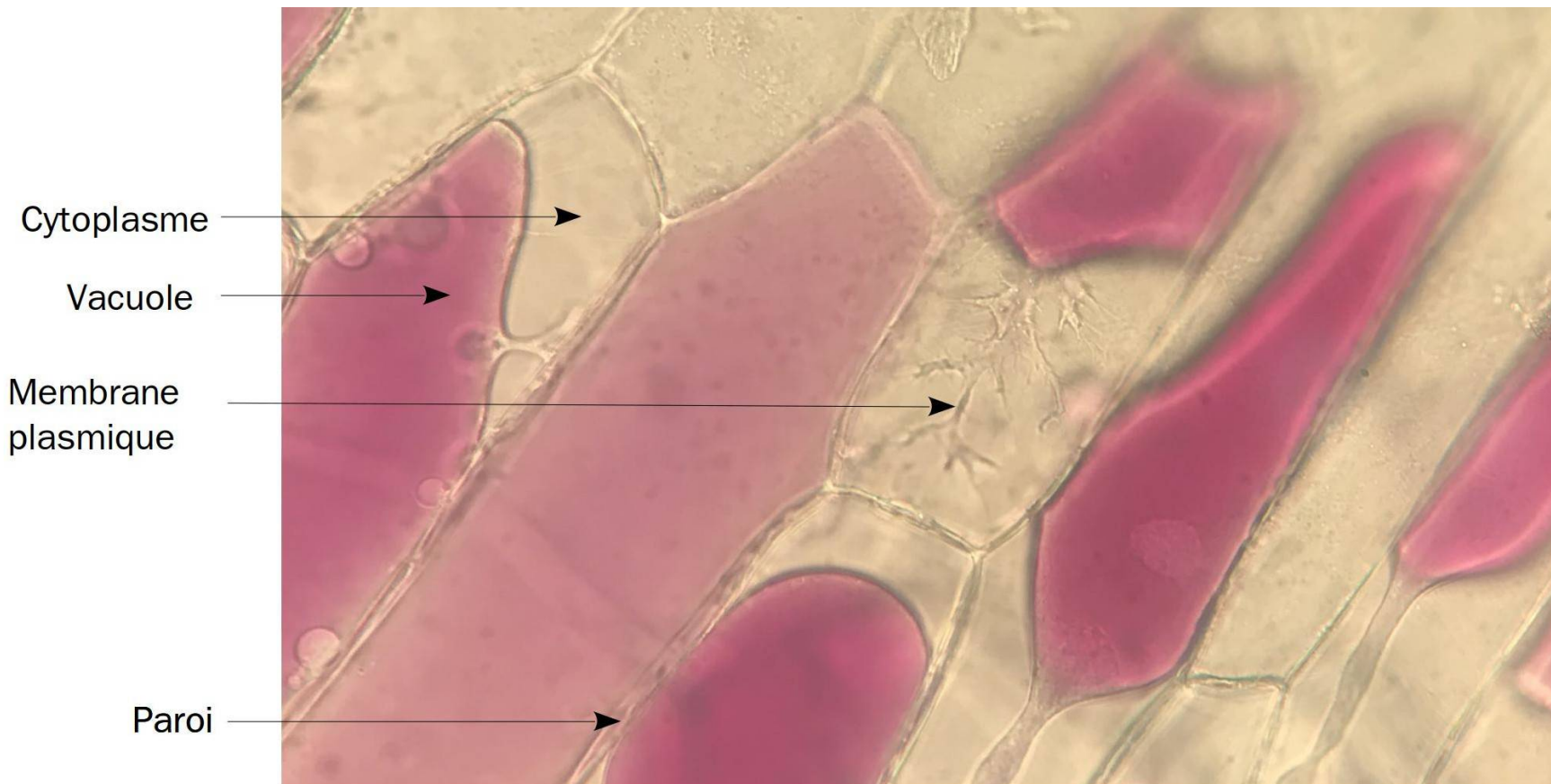


(a)



(b)

Vacuole



Plastes

- Chloroplastes
- Chromoplastes
- Amyloplastes



Endosymbiose



CPES 1 – Janson de Saily – T. Ferroir & T. Lorin

