

POWER BREAK

REFILL YOUR BODY



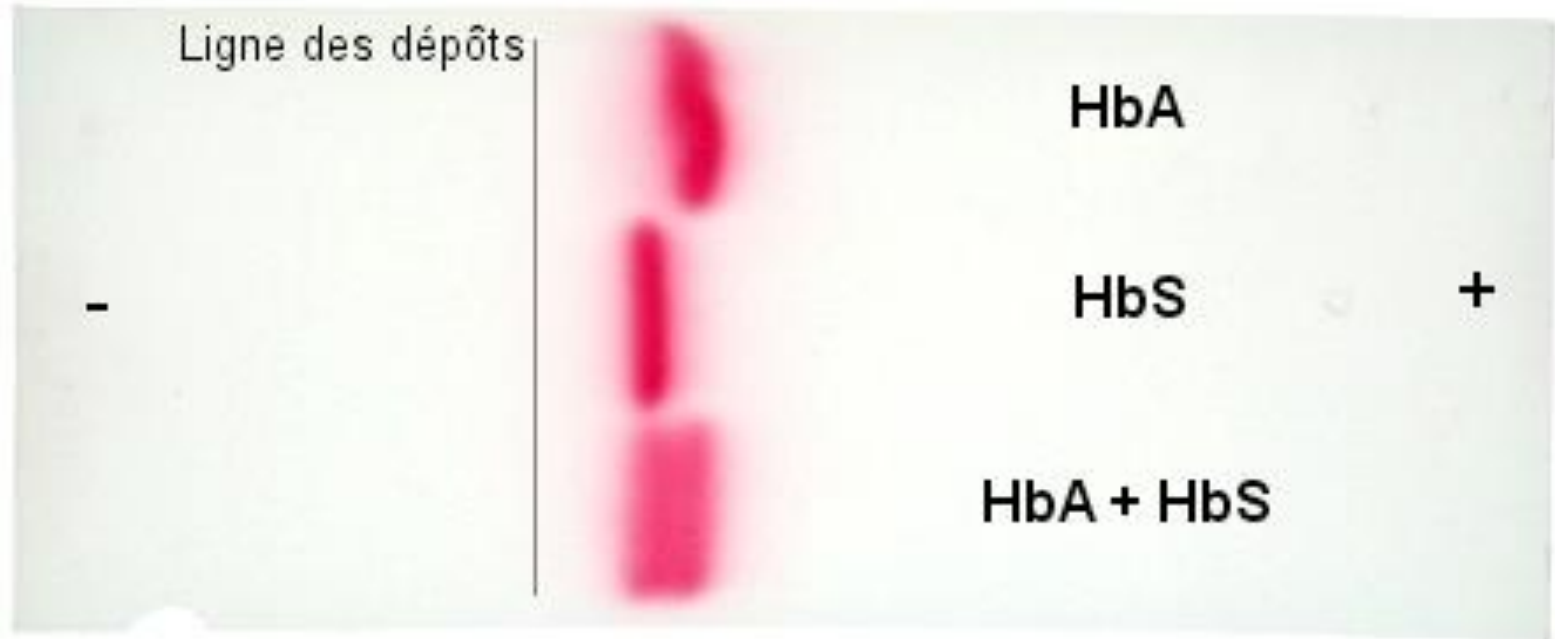
TP :
Protéines

EXCLUSIVITÉ MONDIALE

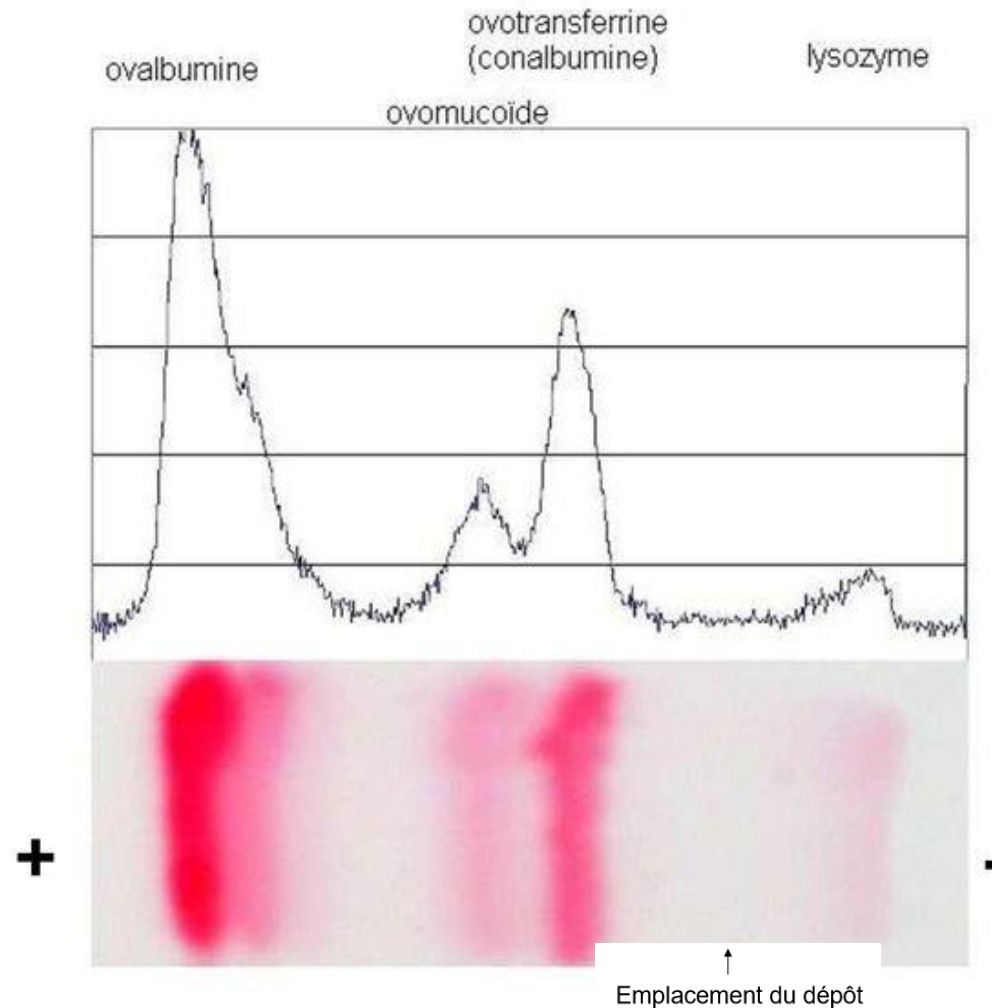
**LE DISTRIBUTEUR
AUTOMATIQUE DE
BOISSONS PROTÉINÉES
FRAÎCHES POUR
BOOSTER VOTRE
SALLE DE SPORT**



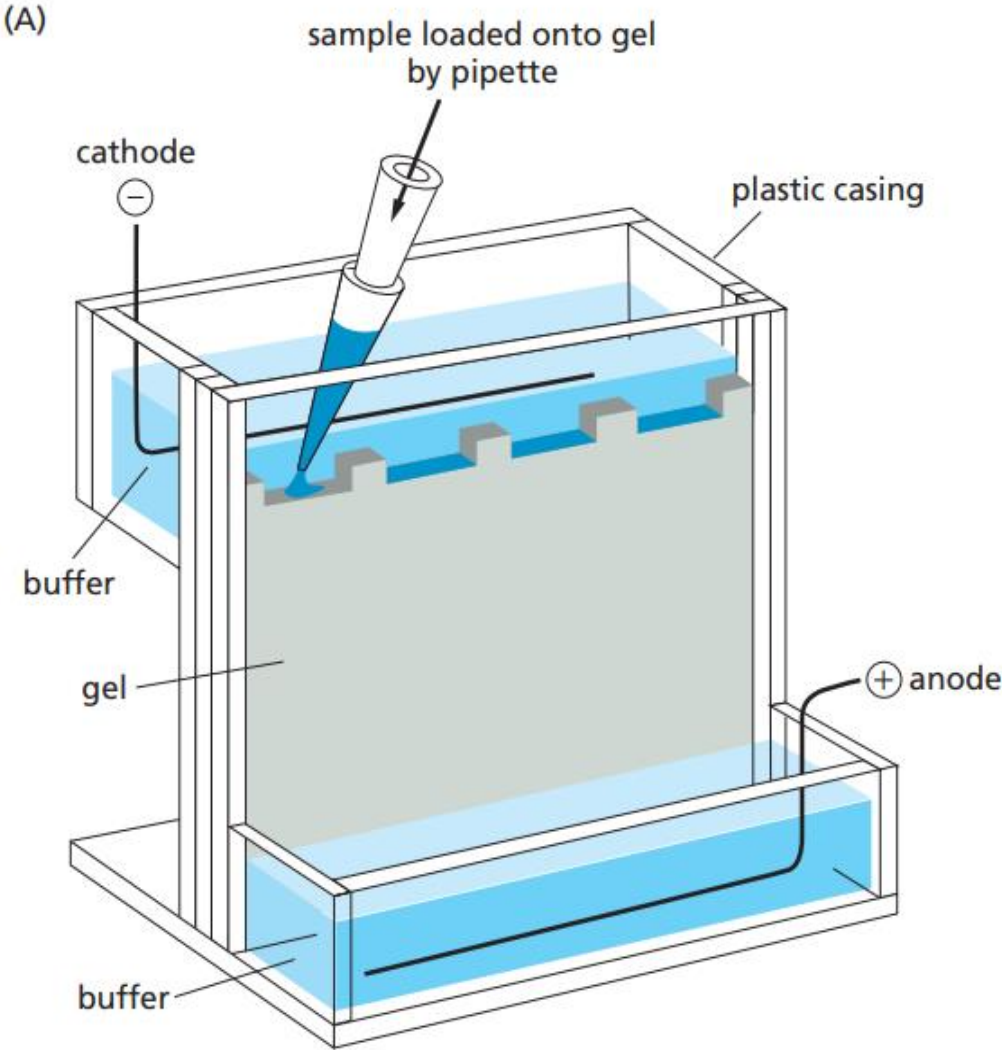
Résultat de la migration de HbA/HbS



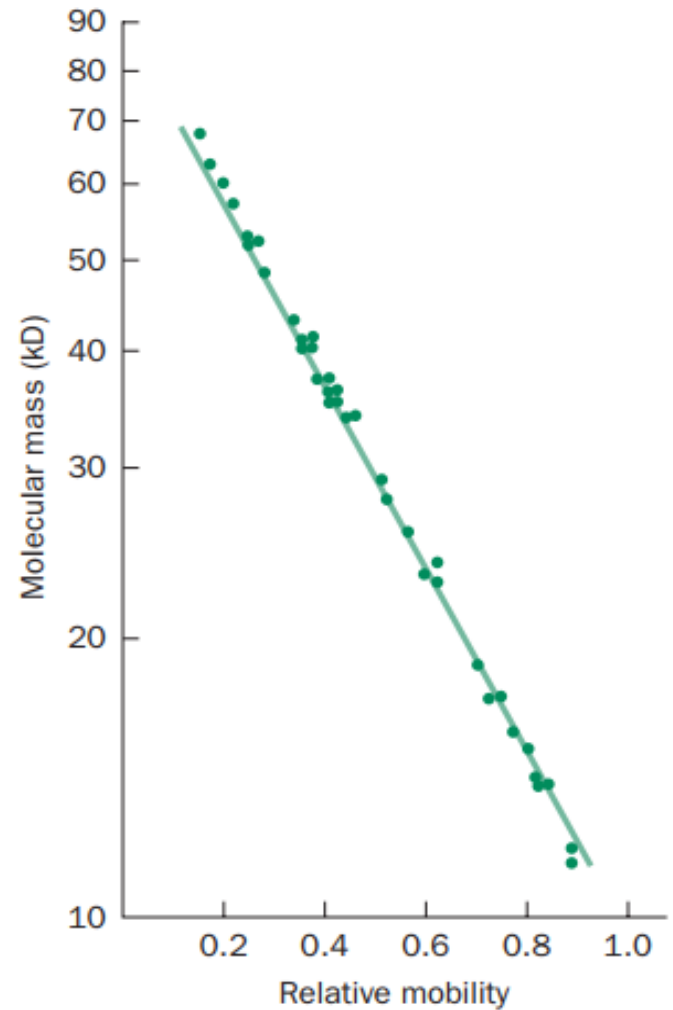
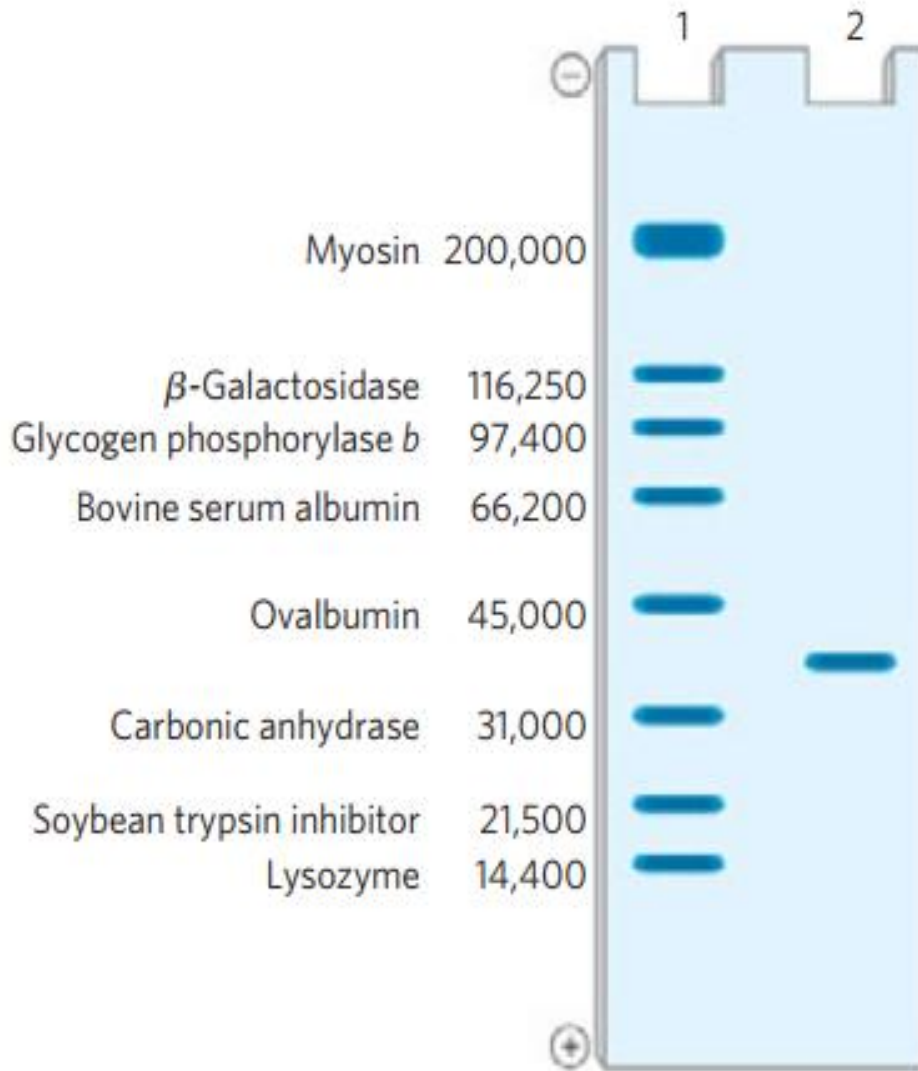
Résultat de la migration des protéines de blanc d'oeuf



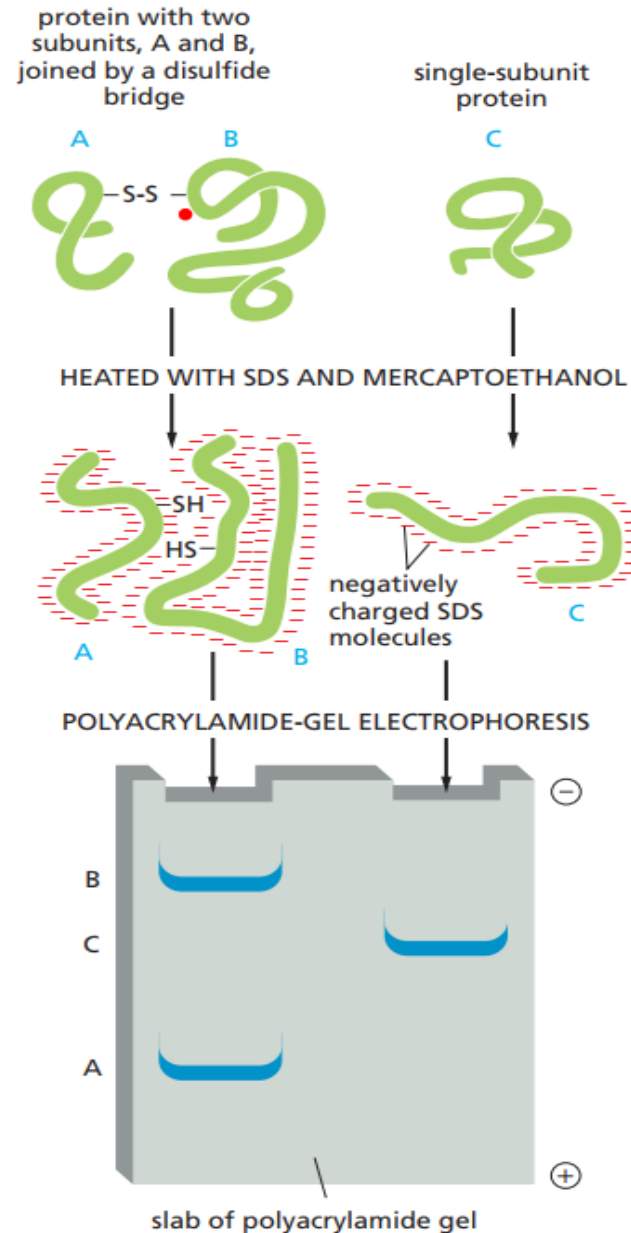
Electrophorèse en conditions dénaturantes



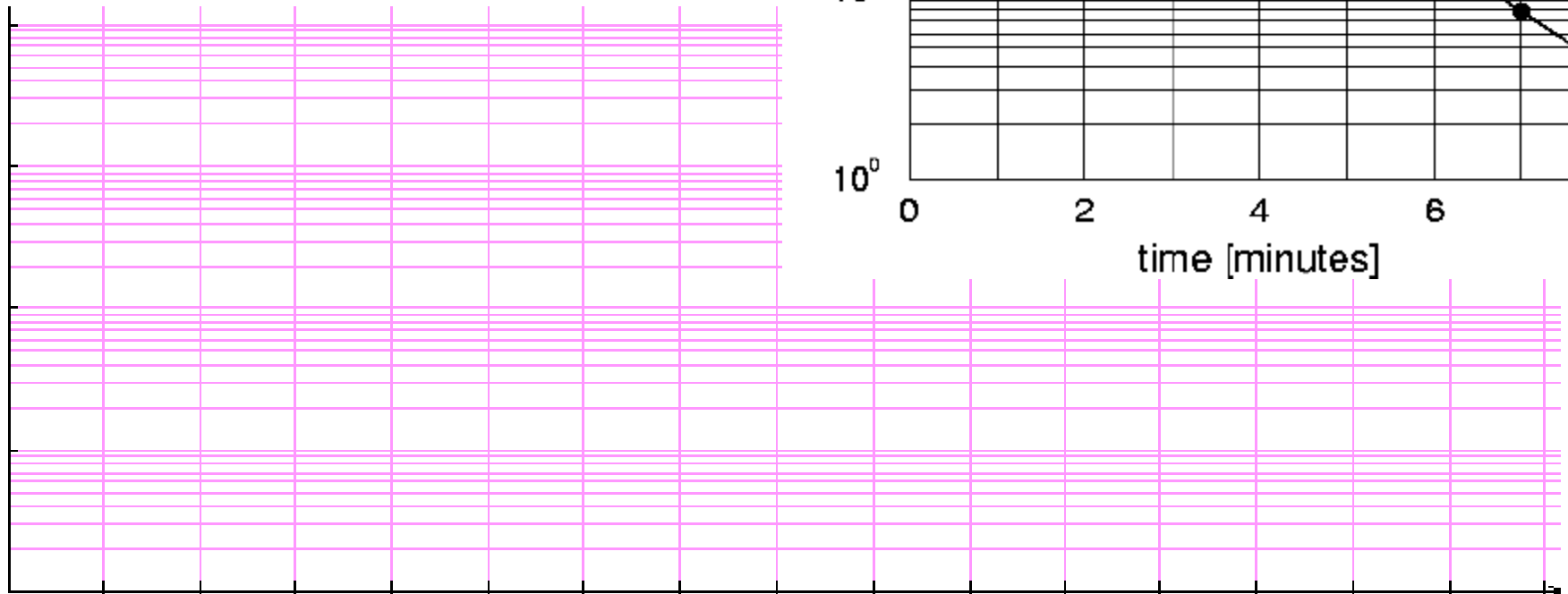
Electrophorèse en conditions dénaturantes



SDS-PAGE avec ou sans beta-mercaptoéthanol

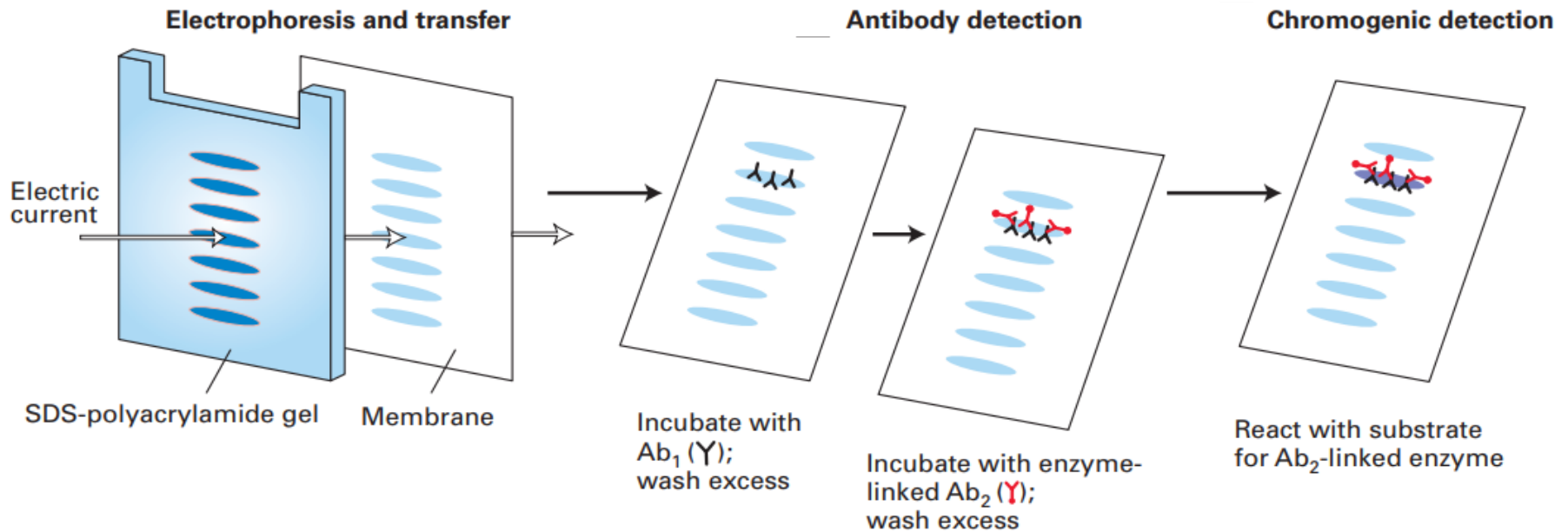


Papier semi-log

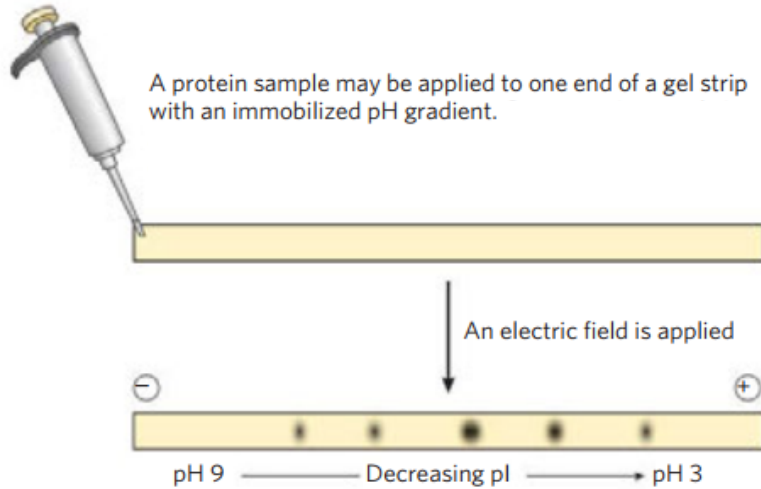


Western blot

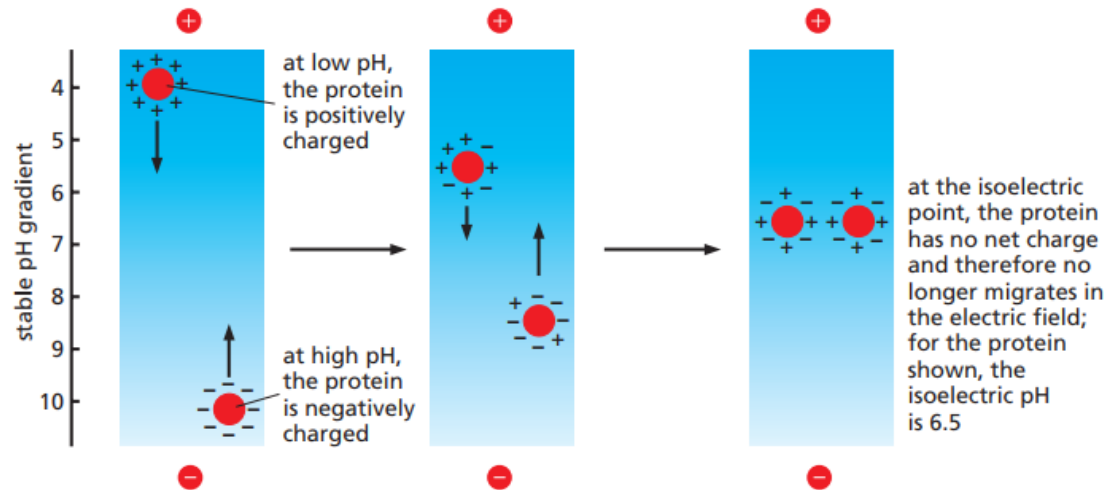
<https://www.youtube.com/watch?v=SrYzulGMBBE>



Electrophorèse 2D (pour info)



After staining, proteins are shown to be distributed along pH gradient according to their pI values.



Electrophorèse 2D (pour info)

